

### Legend

#### NHDES Segment Watershed

- not impaired
- non-nitrogen impaired
- nitrogen impaired

Regional Urbanized Area

MS4 Catch Basins

MS4 Outfall within 300' of Receiving Water or 150' of Wetland

MS4 Outfall

+ Interconnection to NHDOT MS4

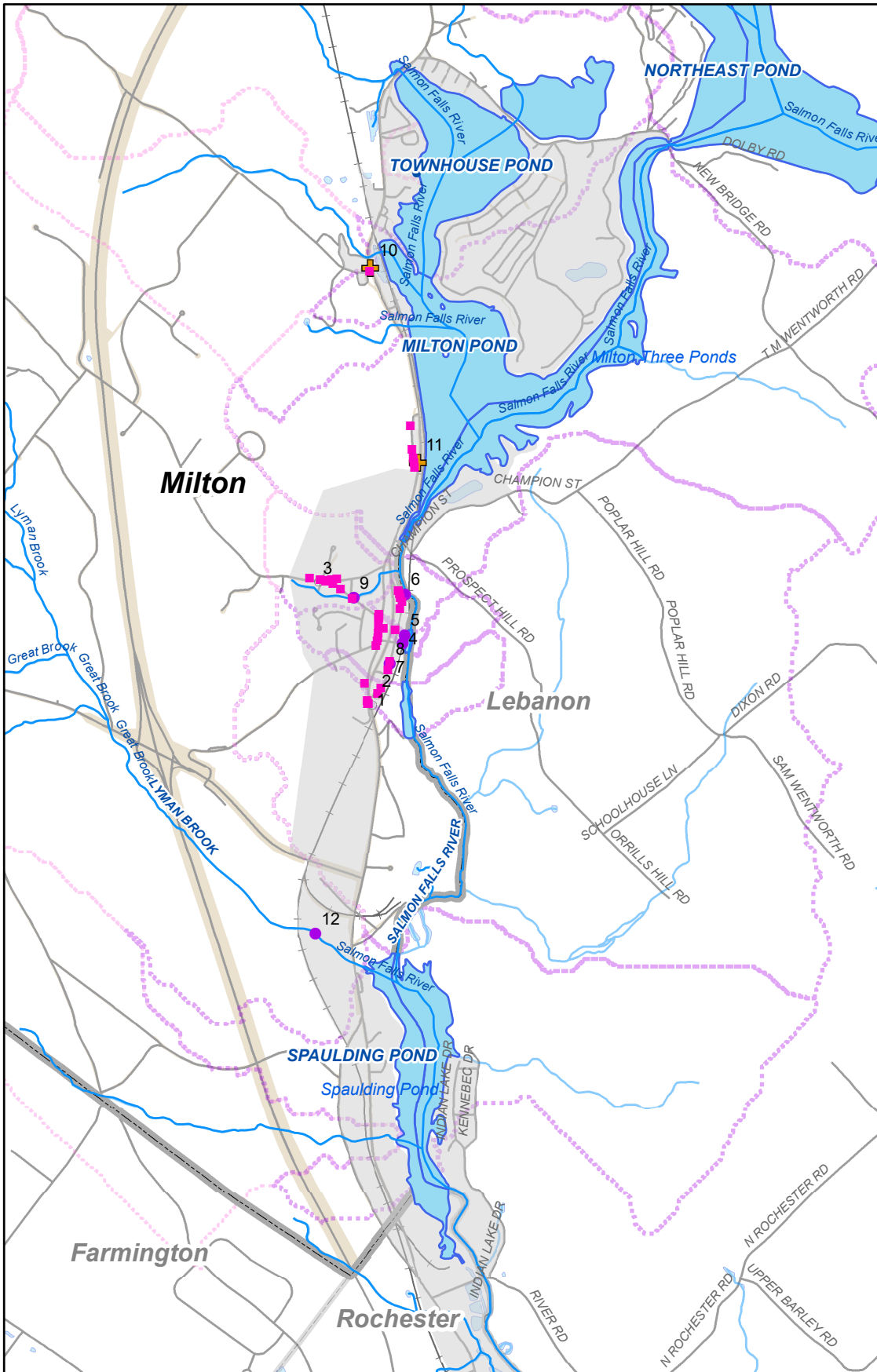
\*structures by desktop analysis to be field verified

0 0.5 1 2 3 4 Miles

5/20/2021

NOTE:  
Salmon Falls River and tributaries are included in Great Bay Nitrogen Impairment (GBT)

**TOWN OF MILTON NH  
MS4 MCM3 MAPPING  
MS4 INFRASTRUCTURE  
SHEET 1 OF 2**



### Legend

#### NHDES Segment Watershed

- not impaired
- non-nitrogen impaired
- nitrogen impaired

MS4 Urbanized Area

MS4 Catch Basins

MS4 Outfall within 300' of Receiving Water or 150' of Wetland

MS4 Outfall

Interconnection to NHDOT MS4



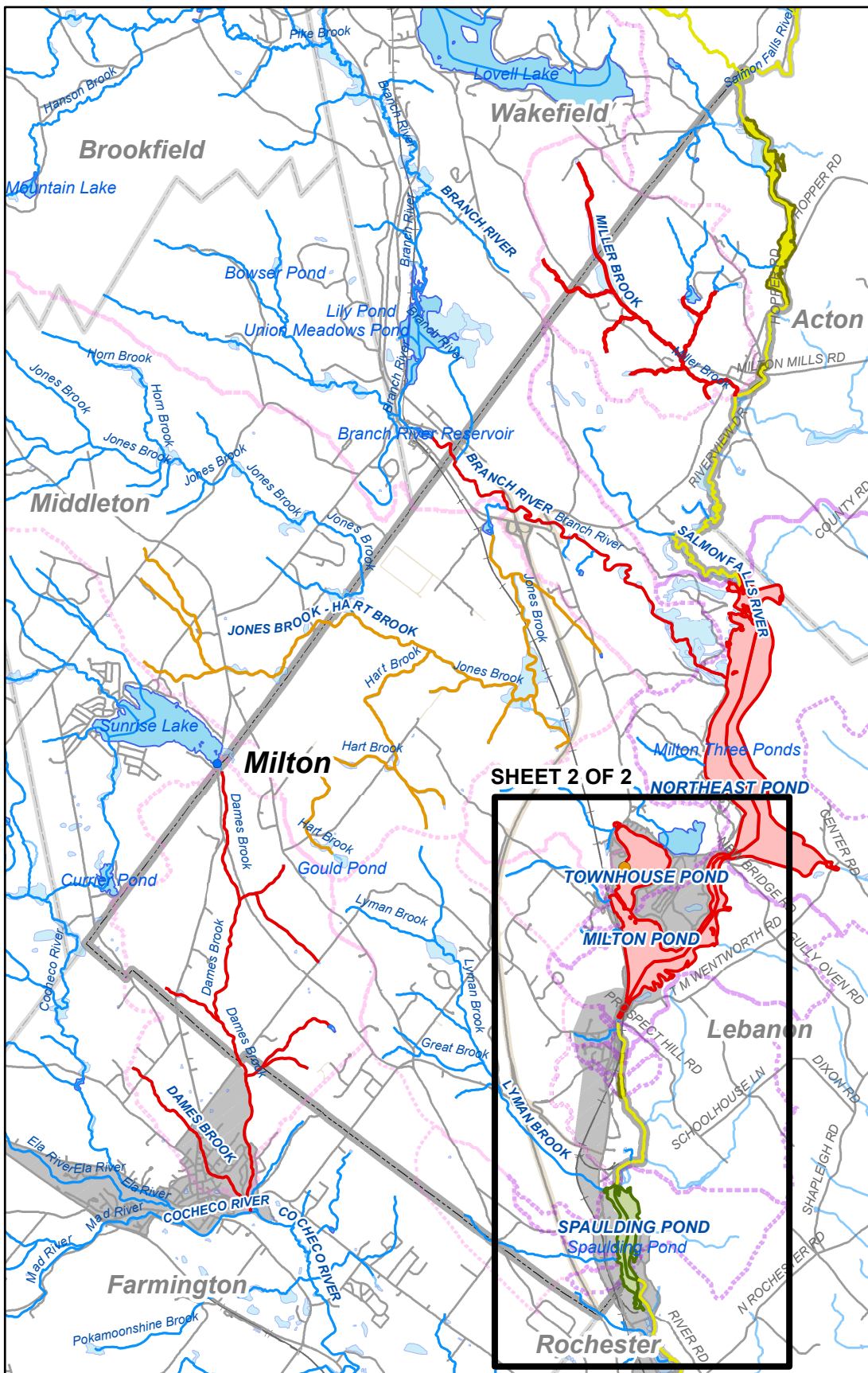
\*structures by desktop analysis to be field verified

0 0.25 0.5 1 1.5 2 Miles

5/20/2021

NOTE:  
Salmon Falls River and tributaries are included in Great Bay Nitrogen Impairment (GBT)

**TOWN OF MILTON NH  
MS4 MCM3 MAPPING  
MS4 INFRASTRUCTURE  
SHEET 2 OF 2**



### Legend

- MS4 Urbanized Area
- NHDES AUID Segment Watersheds**
- not impaired
- non-nitrogen impaired
- nitrogen impaired
- BEACH NHDES IMPAIRMENT (2018)**
- 4A-P Bacteria TMDL
- not impaired
- STREAM NHDES IMPAIRMENT (2018)**
- 5-P
- 5-M
- 4A-M Bacteria TMDL
- 4C-P non-pollutant impaired
- nitrogen impaired (GBT)
- not impaired
- WATERBODY NHDES IMPAIRMENT (2018)**
- 5-M
- 4C-P non-pollutant impaired
- nitrogen impaired (GBT)
- not impaired

SHEET 2 OF 2

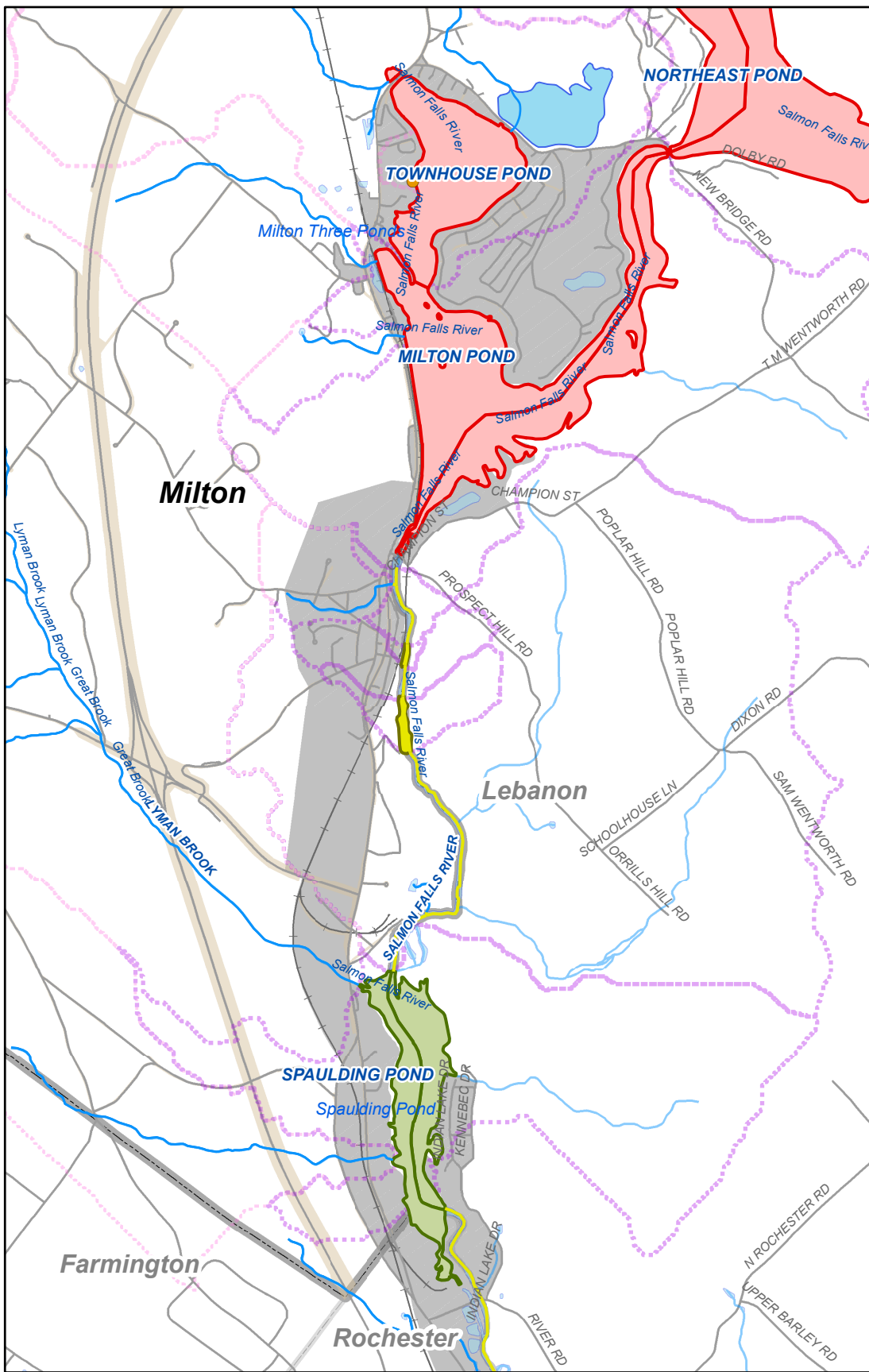
0 0.5 1 2 3 4 Miles

5/20/2021

NOTE:  
Salmon Falls River and tributaries are included in  
Great Bay Nitrogen Impairment (GBT)

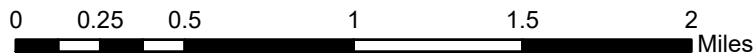
## TOWN OF MILTON NH MS4 MCM3 MAPPING IMPAIRED WATERS BY NHDES AUID IMPAIRMENT CATEGORY SHEET 1 OF 2





**Legend**

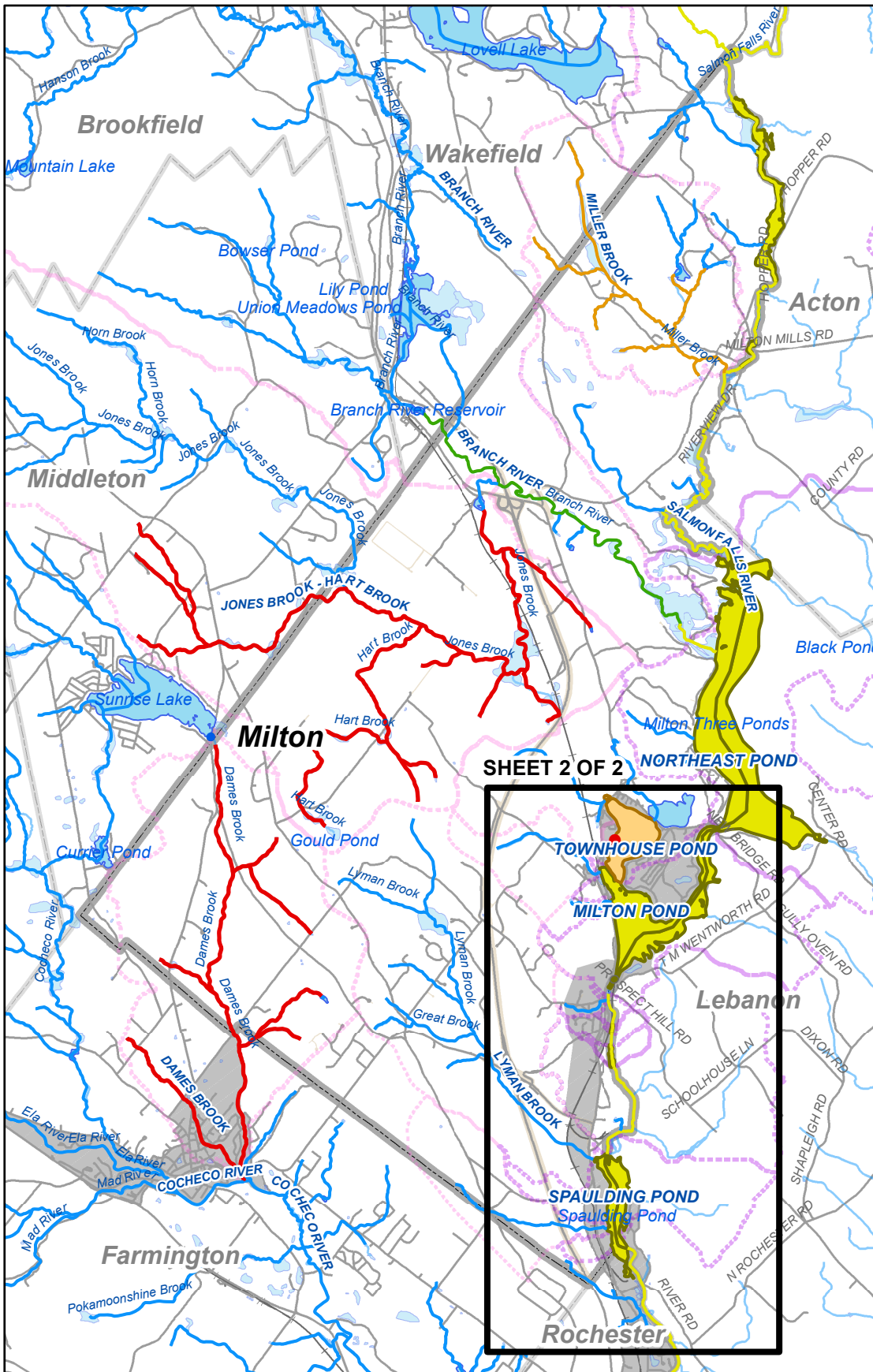
- MS4 Urbanized Area
- NHDES AUID Segment Watersheds**
- not impaired
- non-nitrogen impaired
- nitrogen impaired
- BEACH NHDES IMPAIRMENT (2018)**
- 4A-P Bacteria TMDL
- not impaired
- STREAM NHDES IMPAIRMENT (2018)**
- 5-P
- 5-M
- 4A-M Bacteria TMDL
- 4C-P non-pollutant impaired
- nitrogen impaired (GBT)
- not impaired
- WATERBODY NHDES IMPAIRMENT (2018)**
- 5-M
- 4C-P non-pollutant impaired
- nitrogen impaired (GBT)
- not impaired



5/20/2021

NOTE:  
Salmon Falls River and tributaries are included in  
Great Bay Nitrogen Impairment (GBT)

**TOWN OF MILTON NH  
MS4 MCM3 MAPPING  
IMPAIRED WATERS BY NHDES AUID  
IMPAIRMENT CATEGORY  
SHEET 2 OF 2**



**Legend**

- MS4 Urbanized Area
- NHDES AUID Segment Watersheds**
- not impaired
- non-nitrogen impaired
- nitrogen impaired
- BEACH NHDES IMPAIRMENT (2018)**
- Bacteria TMDL
- not impaired
- STREAM NHDES IMPAIRMENT (2018)**
- Bacteria TMDL
- nitrogen impaired (GBT)
- pH impaired
- other impairment
- not impaired
- WATERBODY NHDES IMPAIRMENT (2018)**
- nitrogen impairment (GBT)
- pH impairment
- not impaired

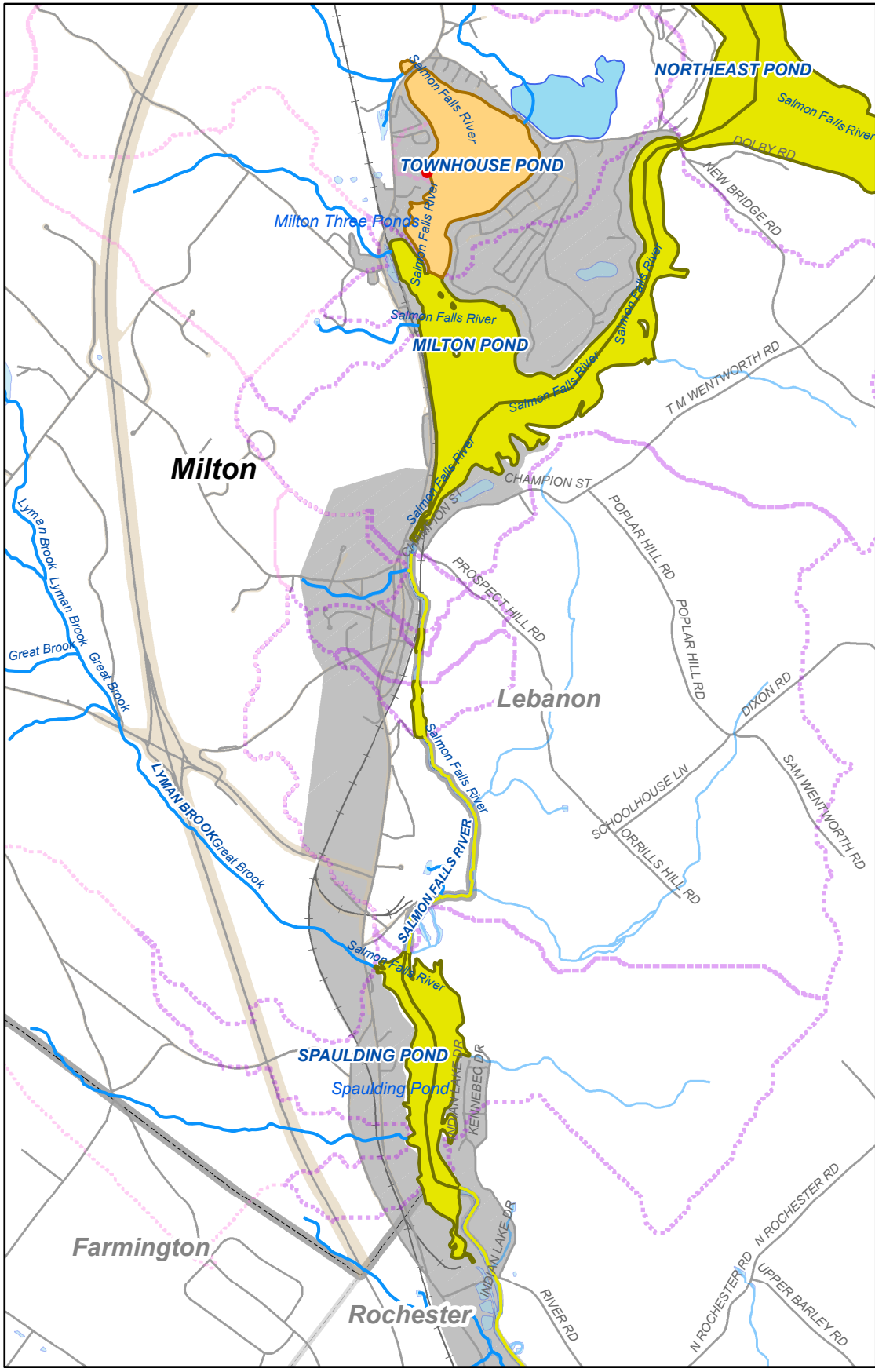
\*additional impairments may also exist

0 0.5 1 2 3 4 Miles

5/20/2021

NOTE:  
Salmon Falls River and tributaries are included in Great Bay Nitrogen Impairment (GBT)

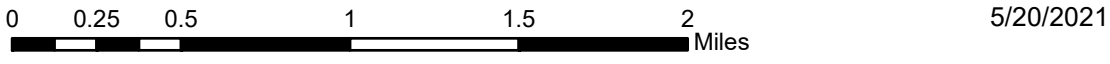
**TOWN OF MILTON NH  
MS4 MCM3 MAPPING  
IMPAIRED WATERS BY  
PRIMARY IMPAIRMENT  
SHEET 1 OF 2**



**Legend**

- MS4 Urbanized Area
- NHDES AUID Segment Watersheds**
- not impaired
- non-nitrogen impaired
- nitrogen impaired
- BEACH NHDES IMPAIRMENT (2018)**
- Bacteria TMDL
- not impaired
- STREAM NHDES IMPAIRMENT (2018)**
- Bacteria TMDL
- nitrogen impaired (GBT)
- pH impaired
- other impairment
- not impaired
- WATERBODY NHDES IMPAIRMENT (2018)**
- nitrogen impairment (GBT)
- pH impairment
- not impaired

\*additional impairments may also exist



NOTE:  
Salmon Falls River and tributaries are included in Great Bay Nitrogen Impairment (GBT)