

Priority Wetlands

Certain of Milton's wetlands have **both** particularly valuable functions **and a higher** risk of degradation. Accordingly, the following high-value wetlands, prioritized by the Conservation Commission from the fifteen significant Milton wetlands of the 2005 Blue Moon Significant Wetlands Study and identified by number on the Official **Milton** Significant Wetlands Map, are provided increased protection with a 50-ft ~~naturally vegetated~~ **Wetland Buffer** and 25-ft ~~vegetated~~ **Wetland Setback**

#4 – Lyman Brook “Heron Rookery”;

#7 – Fish Pond;

#8 - Miller Brook and Pond (northerly extent);

#13 –confluence area of Miller Brook and Salmon Falls River.

All other provisions of this Ordinance, including but not limited to permitted and conditional uses, lot size determinations and enforcement, shall remain the same with respect to these prioritized wetlands. This paragraph shall not apply where development preexists the date of adoption of this revision, and which is otherwise commensurate with the ordinance.

Significant Wetlands Map

Wetlands Protection Overlay District Map



Significant Wetland Areas Map

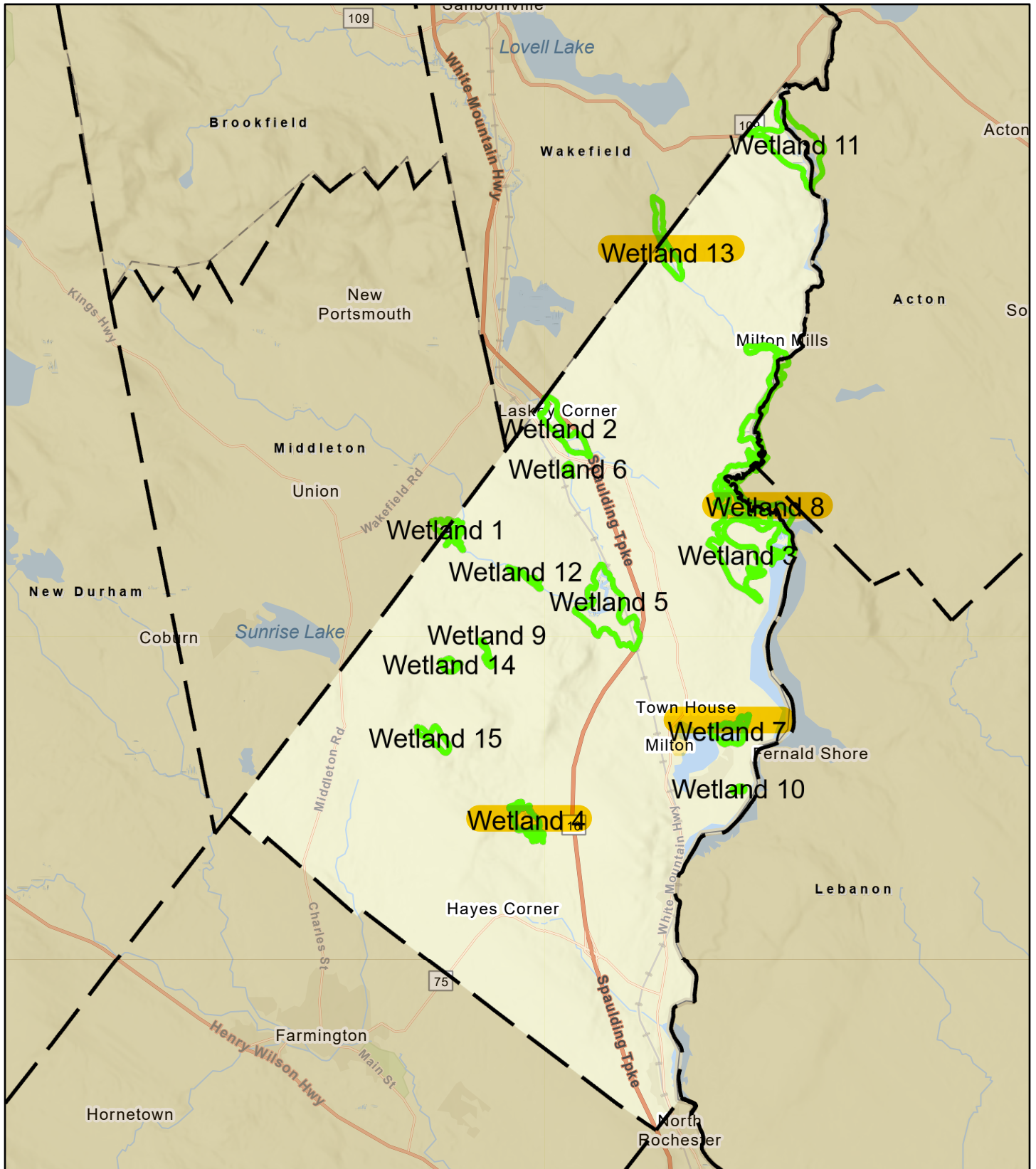
Town of Milton, NH

1 inch = 8000 Feet



www.cai-tech.com

October 26, 2023



Data shown on this map is provided for planning and informational purposes only. The municipality and CAI Technologies are not responsible for any use for other purposes or misuse or misrepresentation of this map.