

Town of Milton New Hampshire

Water Resources

Legend

- Poorly-Drained and Very Poorly-Drained Soils
- Floodplain
- Dam Inundation Area
- Source Water Protection Area
- 11-digit Watersheds
- Public Water Supply Features
 - Lands owned or controlled by suppliers of public drinking water
 - Public Water Supply (Community, Non-Transient)
 - Public Wellhead Protection Area
- Aquifer Protection Areas
 - <= 2000 sq. ft. per day transmissivity
 - > 2000 sq. ft. per day transmissivity
- Lake, Pond
- NWI Wetlands
- River, Stream, Ditch/Canal

Water Quality Hazards

- Source Water Hazard
- Local Potential Contamination Sources
- Underground Storage Tanks
- Discharge Permits
- Ground Water Contamination Areas

Political Features

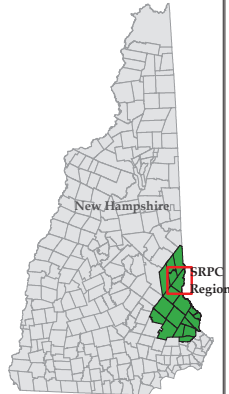
- NH Municipal Boundary
- SRPC Town Boundary
- Tax Parcels

Transportation Features

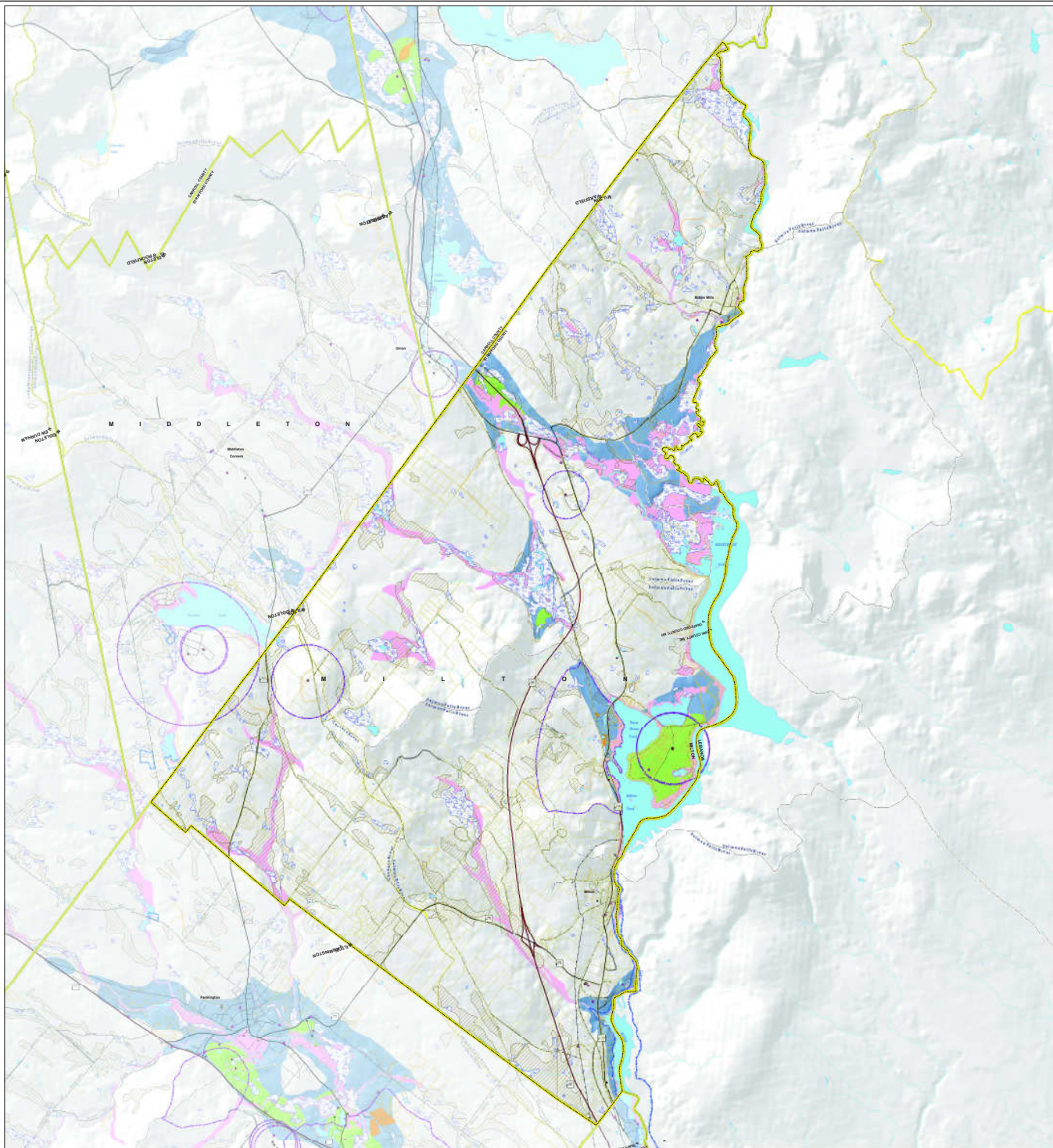
- Legislative Street Class
 - Class I Trunk Line Highway
 - Class II State Aid Highway
 - Class III Recreational Road
 - Class VI Town or City Street
 - Class V Town Road
 - Class VI Not Maintained
 - Private
- Railroad Tracks

Miscellaneous

- Transmission Lines



This map was drafted through a grant provided by the New Hampshire Coastal Program
in support of the National Oceanic and Atmospheric Administration
Grant # 0304-000-001-001-001

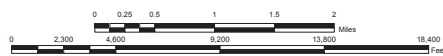


Prepared by: Strafford Regional Planning Commission
2 Bridge Street, Suite 4, Dover, NH 03820
T: (603) 742-2525 F: (603) 742-7966 www.srpcnh.org
Milton Water Resource Map
Date: Author: July 2009 / JDC
File: G:\Images\Standard_Maps\Water_Resources\Milton.mxd

Maps prepared by Strafford Regional Planning Commission are for planning purposes only.

DATA SOURCES

Base Features (including Hydrography, Transmission Lines, Political Features) were automated from 1:25,000 Digital Line Graph data (DLG) as archived by the NH GRANIT Database. Surface water features and other water features were also digitized by NH DDES (November 2006). Digital road centerlines provided by NHDOT and are overlaid by the GRANIT Database. SRPC makes no claim to the validity of the data. SRPC and NHDOT are aware that certain road names are out of date. SRPC would like to be made aware of any street names that are no longer valid.



1:24,000



GRID NORTH
NH STATE PLANE COORDINATES
NAD 1983 (feet)

