

Town of Milton New Hampshire

Transportation

Legend

Transportation Features

Legislative Class

- Class I Trunk Line Highway
- Class II State Aid Highway
- Class III Recreational Road
- Class VI Town or City Street
- Class V Town Road
- Class VI Not Maintained
- Private
- Railroad Tracks

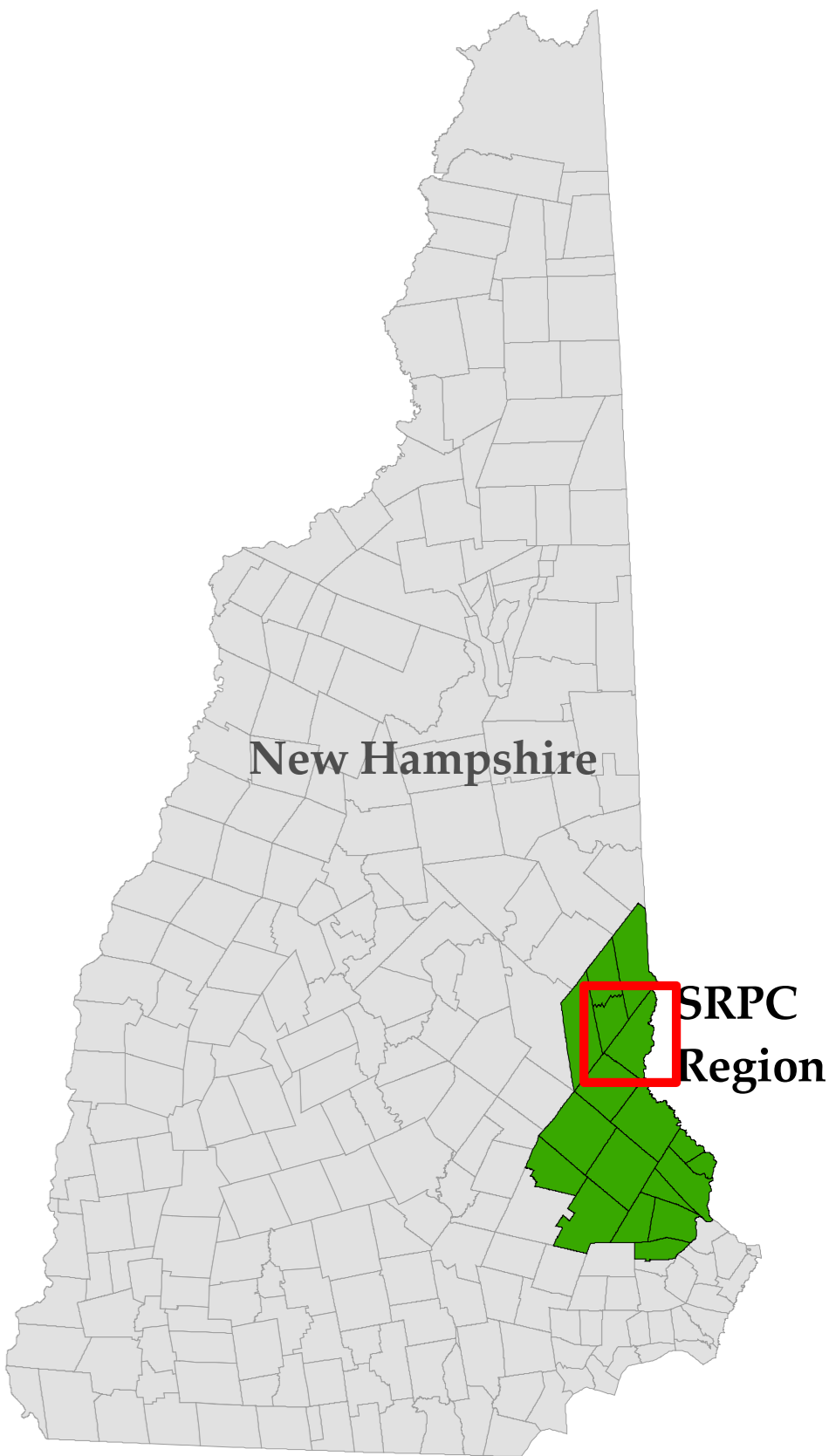
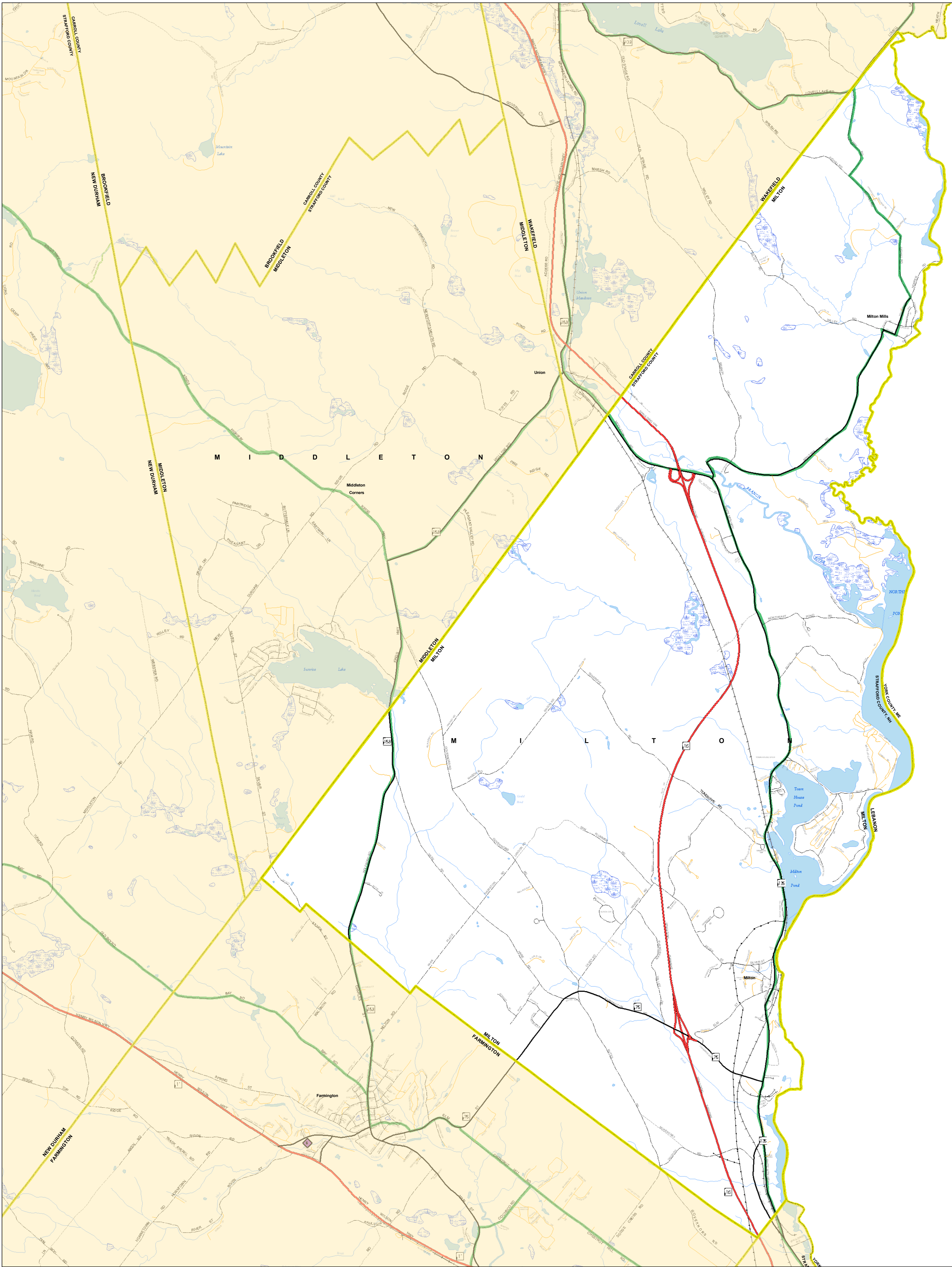
Bike Routes

Political Features

- NH Municipal Boundary
- SRPC Town Boundary

Miscellaneous

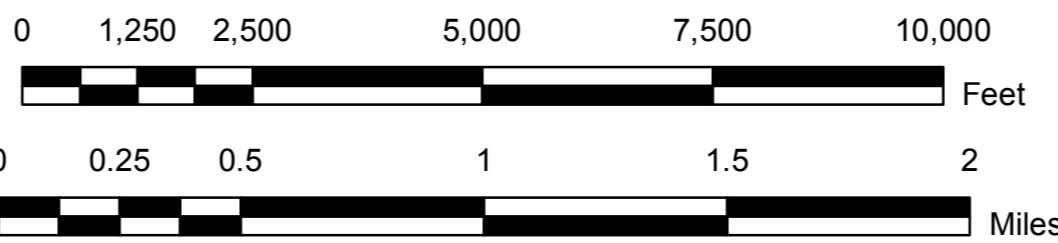
- Transmission Lines
- Streams, Brooks, etc.
- Lakes, Ponds, Rivers
- Wetlands



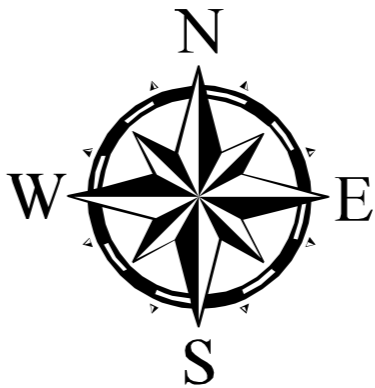
Prepared by **Stafford Regional Planning Commission**
2 Ridge Street, Suite 4, Dover, NH 03820
T: (603) 742-2523 F: (603) 742-7986 em: srpc@stafford.org
Milton Transportation Map
Date/Author: June 2009 / DC
Path: G:\Region\Standard_Maps\Transportation\Milton_Transportation.mxd

Maps prepared by Stafford Regional Planning Commission
are for planning purposes only.

DATA SOURCES
Base Features (Including Hydrography, Transmission Lines, Political Features) were automated
from USGS Digital Line Graph data, 1:24,000, as archived in the NH GRANIT Database.
Digital road centerlines provided by NHDOT and are archived in the GRANIT database.
SRPC makes no claim to the validity of the data. SRPC and NHDOT are
aware that certain road names are out of data. SRPC would like to be made aware
of any street names that are no longer valid.
Traffic counts were collected by NHDOT and SRPC.
Transit Routes were created by SRPC and make no claim to the validity of the data.
Bike Routes were provided by NHDOT Bicycle/Pedestrian Program.



1:25,000



GRID NORTH
NH STATE PLANE COORDINATES
NAD 1983 (feet)

