

Town of Milton New Hampshire

Conservation Lands

Legend

Conservation Land (GRANIT March 2009)

- Permanent Conservation Land
- Unofficial Conservation Land
- Water Supply Lands
- Unprotected Public Openspace Land
- Developed Public Land
- Level Unknown

Surface Water Features

- Streams, Brooks, etc.
- Apparent Wetland Limit
- Lakes, Ponds, Rivers
- Wetlands

Political Features

- NH Municipal Boundary
- SRPC Town Boundary
- Tax Parcels

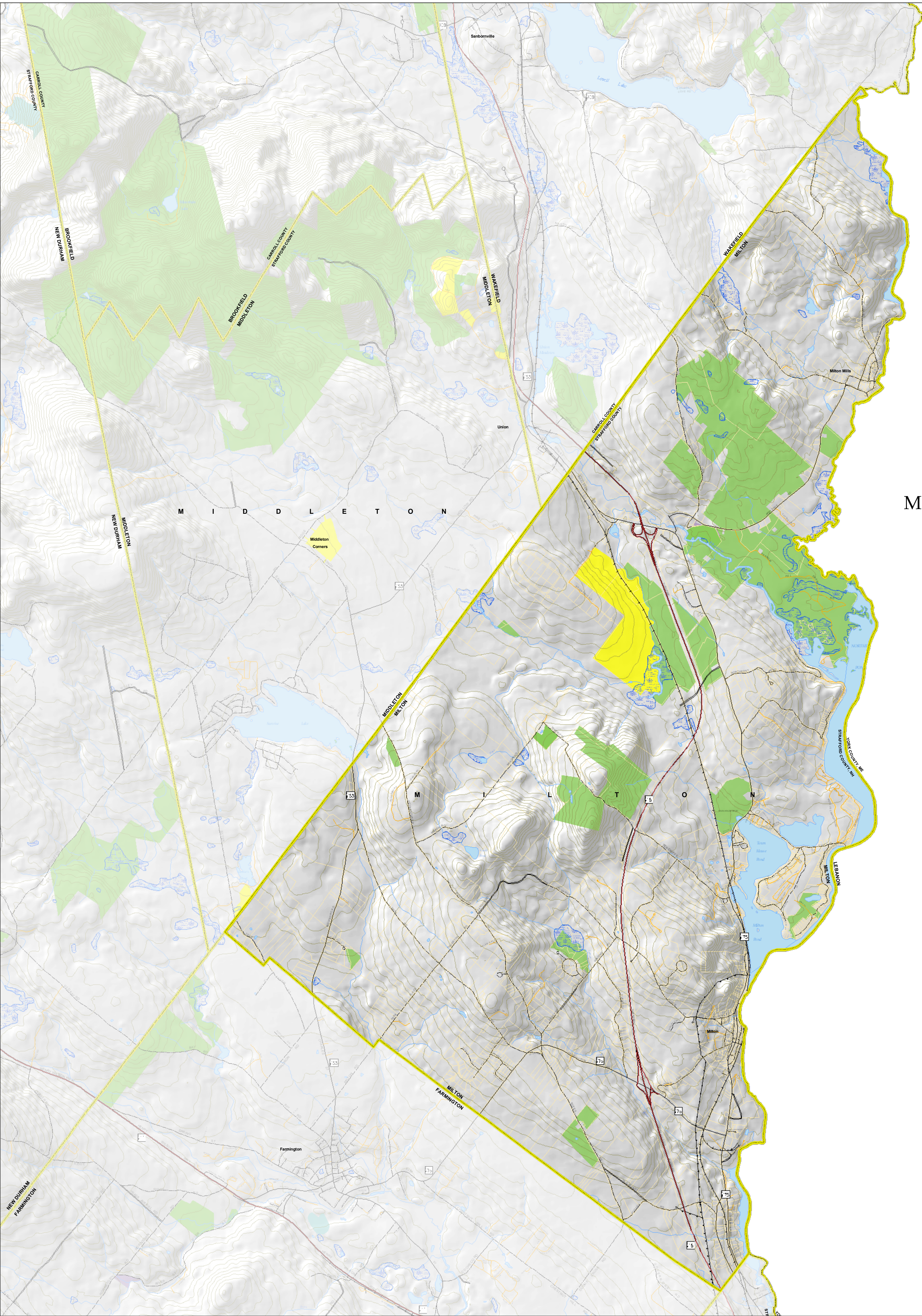
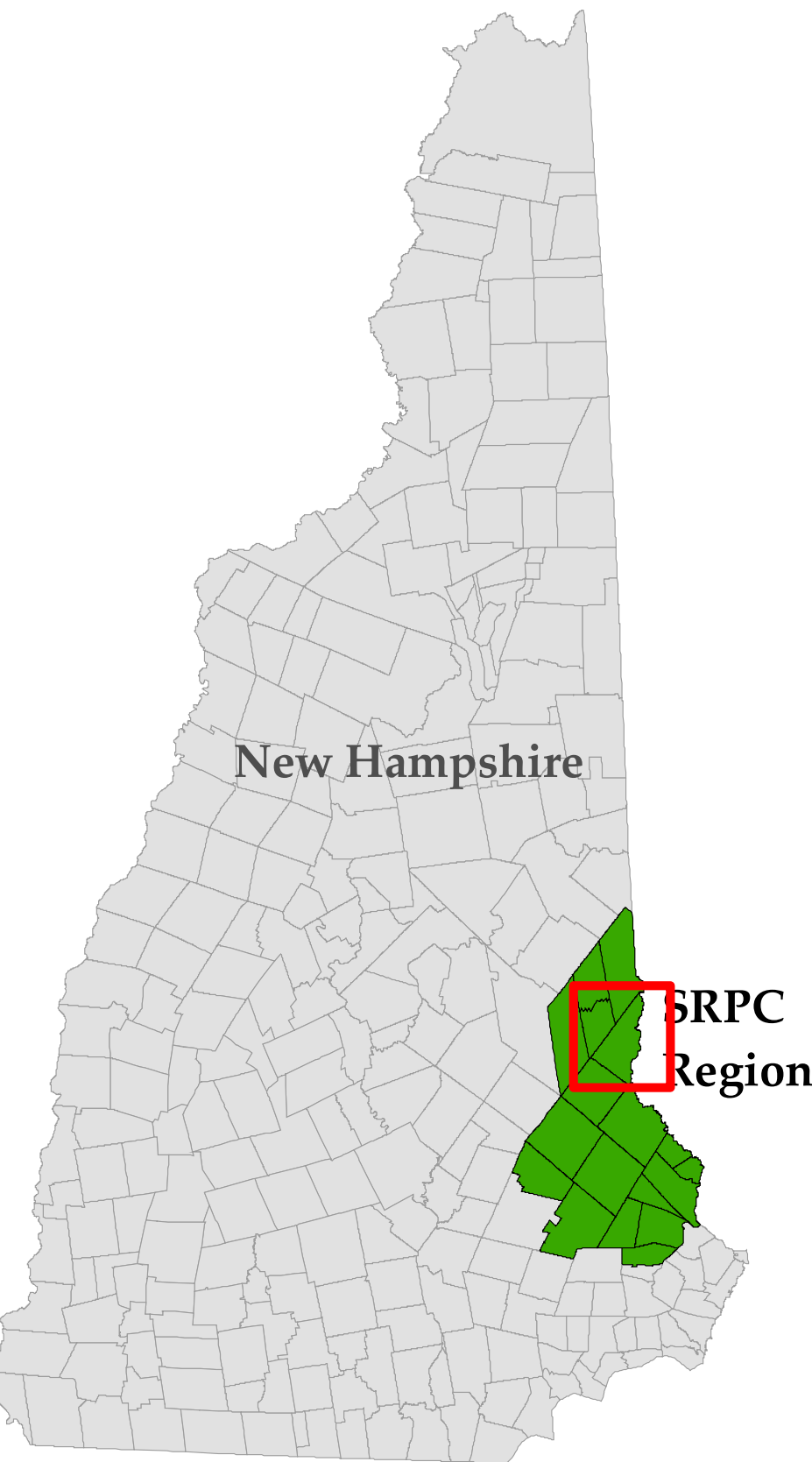
Transportation Features

Legislative Street Class

- Class I Trunk Line Highway
- Class II State Aid Highway
- Class III Recreational Road
- Class VI Town or City Street
- Class V Town Road
- Class VI Not Maintained
- Private
- Railroad Tracks

Miscellaneous

- Transmission Lines
- 10' Contours

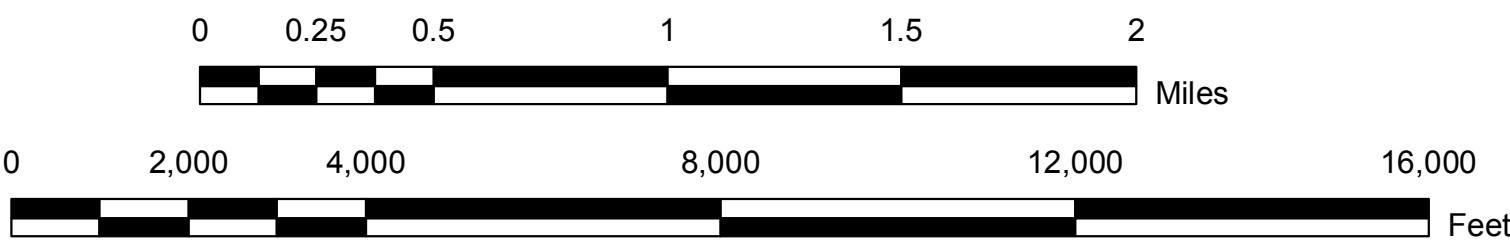


Prepared by **Strafford Regional Planning Commission**
2 Ridge Street, Suite 4, Dover, NH 03820
T: (603) 742-2523 F: (603) 742-7986 em: srpc@strafford.org
Milton Conservation Lands Map
Date/Author: December 2009// DC
Path: G:\Region\Standard_Maps\ConsLand\Milton_Conland.mxd

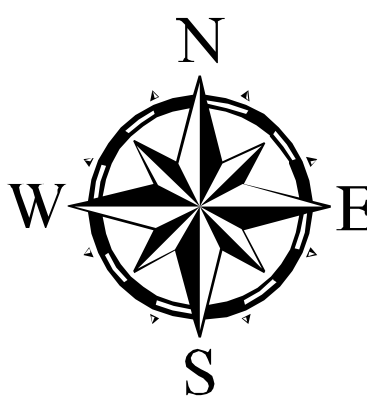
Maps prepared by Strafford Regional Planning Commission are for planning purposed only.

DATA SOURCES

Conservation Lands data taken from the archives of NH GRANIT (March 2009) with updates by SRPC. Data from SRPC represents recent conservation/public land that yet to be entered into the archives of GRANIT.
Digital road centerlines provided by NHDOT and are archived in the GRANIT database.
SRPC makes no claim to the validity of the data. SRPC and NHDOT are aware that certain road names are out of data. SRPC would like to be made aware of any street names that are no longer valid.



1:26,000



GRID NORTH
NH STATE PLANE COORDINATES
NAD 1983 (feet)

