

Town of Milton New Hampshire

Community Features

Legend

Community Features

- Municipal Office
- Hospital
- Post Office
- Elementary School
- Middle Schol
- High School
- College/University
- Library
- Grocery Store
- Event Facility
- Fire/Police Staion
- Fire Station
- Police Station

Natural Features

Surface Water Features

- Lake, Pond,
- Swamp/Marsh
- River, Stream, Ditch/Canal

Political Features

- NH Municipal Boundary
- SRPC Town Boundary
- Tax Parcels

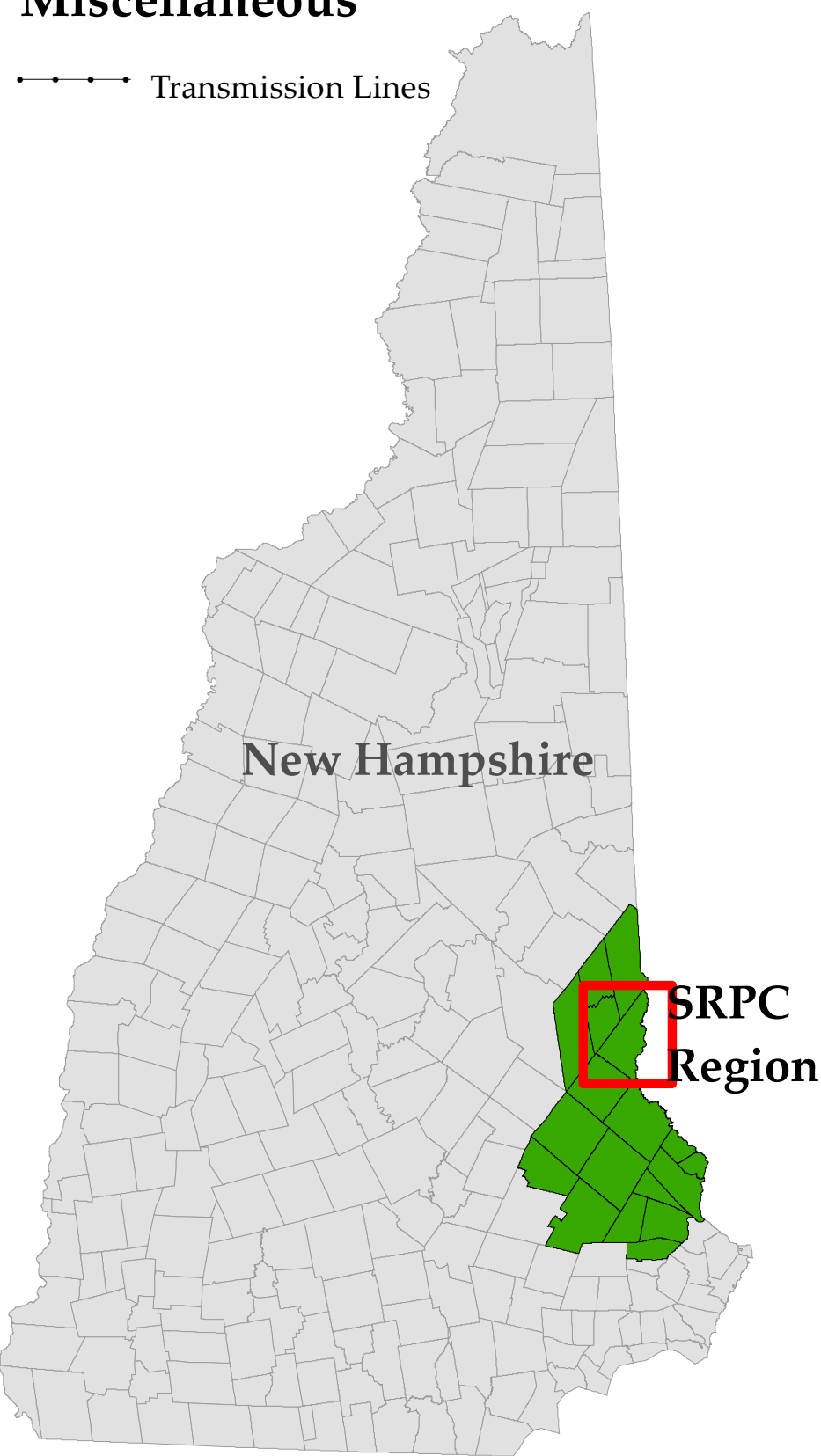
Transportation Features

Legislative Street Class

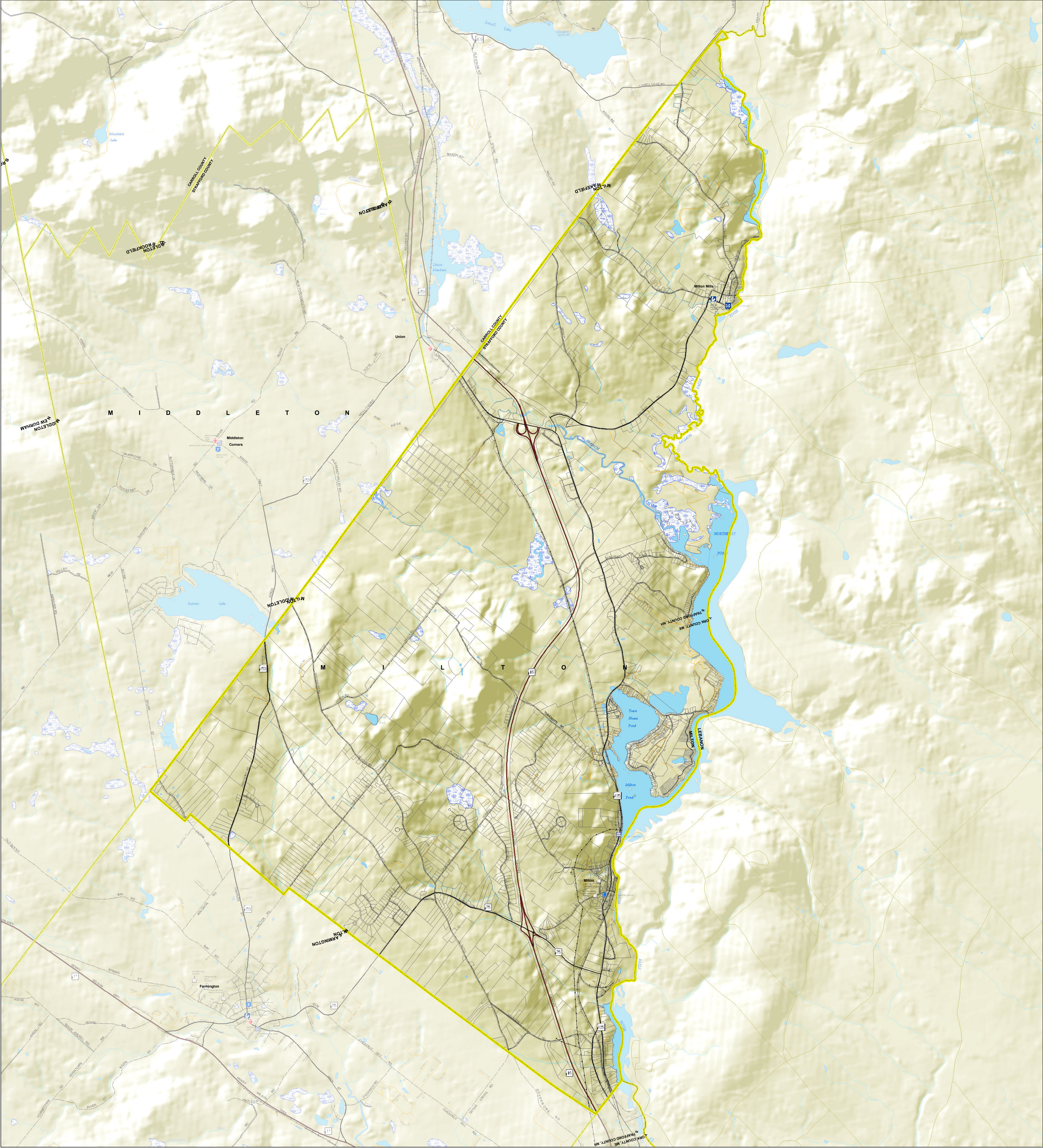
- Class I Trunk Line Highway
- Class II State Aid Highway
- Class III Recreational Road
- Class VI Town or City Street
- Class V Town Road
- Class VI Not Maintained
- Private
- Railroad Tracks

Miscellaneous

- Transmission Lines



This map was funded through a grant provided by the New Hampshire Coastal Program
in present to the National Oceanic and Atmospheric Administration
Grant # 010-044-3642-091-0415



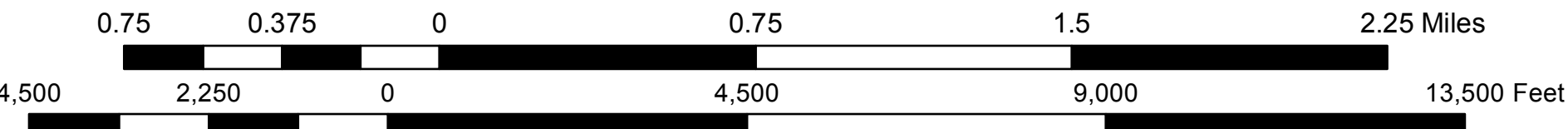
Prepared by **Strafford Regional Planning Commission**
2 Ridge Street, Suite 4, Dover, NH 03820
T: (603) 742-2523 F: (603) 742-7986 em: srpc@strafford.org
Milton Community Features Map
Date/Author: July 2009 // DEA
Path: G:\Region\Standard_Maps\CommFeatures\Milton_CommFeatures.mxd

Maps prepared by Strafford Regional Planning Commission
are for planning purposes only.

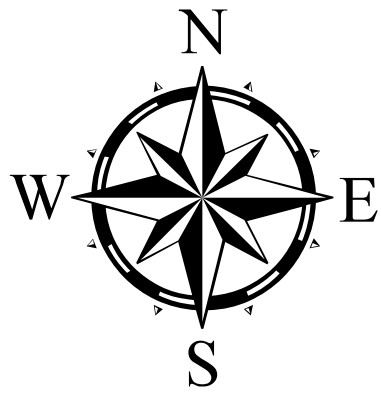


DATA SOURCES

Base Features (Including Hydrography, Transmission Lines, Political Features) were automated from USGS Digital Line Graph data, 1:24,000, as archived in the NH GRANIT Database. Community features data was collected by SRPC as part of the NHDES Sprawl Indicators Mapping updated in 2006. Digital road centerlines are provided by NHDOT and are archived in the GRANIT database. SRPC makes no claim to the validity of the data. SRPC and NHDOT are aware that certain road names are out of date. SRPC would like to be made aware of any street names that are no longer valid. Hillshade used as a background on this map was created from USGS 30-meter Digital Elevation Models (DEM).



1:24,000



GRID NORTH
NH STATE PLANE COORDINATES
NAD 1983 (feet)

