

THE MILTON GAZETTE

September 2014

News from the Town of Milton, New Hampshire

September 2014



State Primary Election Day
September 9, 2014
Emma Ramsey Community Center
8:00 am - 7:00 pm
voters may register at the polls on election day.
RSA 653:8; 654:7-a, 7-b

Partisan and Non Partisan Primaries

Democrats hold : Semi-closed Primary ---- Republicans hold : Semi-closed Primary

If you are a registered member of a party, you may change your registration at any primary, however, you will not be allowed to vote in that primary. Undeclared voters may declare a party and vote at any primary. The law allows an undeclared voter to declare a party at the polls, vote the ballot of that party, and then change their party affiliation back to undeclared simply by completing the form available from the Supervisors of the Checklist at the polling place.

About Semi-closed Primary

Independents may choose which party primary to vote in, but voters registered with a party may only vote in that party's primary. The middle ground between the exclusion of independents in a closed primary and the free-for-all of open primaries, the semi-closed, primary mostly eliminates the concern about members registered to other parties "raiding" another's election.

States holding Semi-closed Primaries:

[Alaska](#) , [Massachusetts](#) , [Montana](#) , [Nebraska](#) , [New Hampshire](#) , [North Carolina](#) , [Ohio](#) , [Rhode Island](#) , [South Dakota](#) , [West Virginia](#) ,



Milton Supervisors of the
Checklist Session
September 2, 2014 - 7:00 - 7:30 pm

The Supervisors of the checklist will meet for corrections to the checklist on Tuesday, September 2, 2014 at the Emma Ramsey community center. This is the last chance to register as a new voter before primary day. RSA 656:22.

There will be no party changes accepted. Party changes can not be implemented.



SCHOOL Is In Session...

Welcome Back all Milton Students
First Day of School is
Wednesday, August 27th

For more information about each school please visit their websites @ <http://www.milton.k12.nh.us> & <http://www.milton.k12.nh.us/MES/index.htm>

Parents, Friends & Family
of Milton Elementary School Students
Your Invited to our "First Day of School Celebration"
Wednesday, August 27, 2014, from 8:15 - 9:00
at the Elementary School

Parents are welcome to bring their children to their classrooms when the bell rings, and stay with them until 8:40 am. At that time parents should proceed to the multi-purpose room for refreshments, introductions and information.

Milton Elementary School Open House
Tuesday, September 16, 2014
6:00 - 7:00 PM
Please join them and meet the staff!

139th Rochester Fair September 12th - 21st



\$14 pay-one-price! Includes all mechanical rides.
(The NEW Speed XXL is \$5 more)

New this Year: Children under 36" are free admission!

If you have a child under 36" but over 30" and they want to go on kiddie rides, you must also purchase a ticket for them.
Monday through Friday is FREE from 9am-1pm. See the livestock and exhibits at no charge.

Milton Fire and Rescue



Milton Fire-Rescue wishes everyone a Happy Back to School Year! Can it really be true, summer is over? Well, maybe students are headed back to school but the weather is still very pleasant. So as children resume their commute to school whether on foot, bike or school bus, please remember to yield to the pedestrians in crosswalks and bikers, remember to wear a bike helmet. Let's have a safe return to the academic year.

This fall will be bringing cooler temperatures, so before your furnace fires up, be certain to check your smoke and carbon monoxide detectors. These simple inexpensive gadgets may very well save you and/or your family member's lives. These everyday tools in a home are almost as simple to install as wearing your seatbelt in a car. Both of these items can save your life with very little effort.

If you have questions about smoke or carbon monoxide detectors, please stop by and see a Milton Fire-Rescue member during Milton Pride Day on September 20th. We will have an exhibit there and an opportunity for you to meet a few of our responders and ask as many questions as you like. Meanwhile, remember school is resuming and students and buses will be back on the roads.

Contact Information

Emergency Dial: 911

Station 1 : (603) 652-4201

Station 2: (603) 473-2157

Email: info@miltonfirerescue.com

www.miltonfirerescue.com



Mi-Te-Jo

Campground

Take Your Tractor Camping Weekend

Tractor pulling by the Sugar Hill Snubbers, tractor displays, tractor fun and a tractor parade.

"Fireman's Breakfast" and lunch held on Saturday to benefit the Milton Fire Department.



MOOSE MOUNTAINS REGIONAL GREENWAYS

Box 191, Union, NH 03887

603-473-2020

info@mmrg.info

Moose Mountains Regional Greenways Presents Moonlight Walk

On Tuesday, September 9, naturalist Sally Cornwell will lead families on a Moonlight Walk from 5:30 to 8 pm at the Moose Mountains Reservation in Brookfield. The event is presented by Moose Mountains Regional Greenways and sponsored by Trager Massage, LLC.

This event will start near dusk with the moon rising and just a day past full. The guided walk will follow about a mile of woods roads and foot paths to the old Burrows Farm, during which Cornwell will talk about the wildlife and plants that can be seen along the way. The destination will be a hillside, where Cornwell will further entertain and educate children and parents with stories from the Native American tradition.

Cornwell, a self-taught naturalist, has been leading nature programs for adults and children for over twenty years. She is a popular leader of many MMRG outings, including a similar successful moonlight walk last year, in which participants enjoyed listening several Barred Owls after learning to imitate their call.

The outing is free but participants are asked to pre-register by calling (603) 978-7125 or emailing info@mmrg.info. Please bring blankets to sit on and flashlights if needed for the return walk.

Moose Mountains Regional Greenways (MMRG) is a non-profit land trust working to conserve and connect important water resources, farm and forest lands, wildlife habitats, and recreational land in Brookfield, Farmington, Middleton, Milton, New Durham, Wakefield, and Wolfeboro. In 2008, MMRG partnered with the Society for the Protection of NH Forests to conserve the 2,300-acre Moose Mountain Reservation, now owned and managed by the Forest Society. The two organizations are now collaborating once again to add an abutting 150-acre property that features trails, forested ridges and scenic views. For more information, see the front page article in MMRG's summer newsletter, which can be viewed online at www.mmrg.info.





News from Milton Town Hall

September Meetings @ Town Hall

Selectman: Mon, September 8th & 22nd(6:00 pm)
 Planning Board: Tuesday, September 2nd (6:30 pm)
 Conservation Comm. :Wednesday, Sept. 3rd (6:30)
 Budget Committee: Tuesday, September 16th (6:30)
 Zoning Board: Thursday, September 25th (6:00 pm)
 Economic Dev. Committee: September 15th (3:30 pm)
 Fire Department Wed., Sept. 3rd & 24th (5:30 pm)
 Recreation Comm.: Wed, TBA (6:00 pm)
 Water District Comm.: Tues. Sept. 30th (5:15) Downstairs

Current Employment Opportunities working for the Town of Milton

Check out the Town Of Milton's
 Website at: <http://miltonnh-us.com/>
 Job descriptions/Applications/Information
 Are available for printing or you can
 visit the town hall for printed applications.

Substitute Teacher Wanted

Milton Elementary is looking for Substitute Teachers for
 Kindergarten thru Grade 5.
 If interested you may picked up an application form at
 the school office.



Milton Democrats
 Meet Thursday, Sept. 11th

Milton will host a meeting of the Tri-Town Democrats
 (from Milton, Farmington, and New Durham) on
 Thursday, September 11th, October 9th, November
 13th and December 11th 7:00 p.m., at the
 Emma Ramsey Center.

Open to all registered Democrats in
 the tri-town area. The 2014 election season is getting
 underway and we encourage your active participa-
 tion. Call Susann Brown (652-4306.)
 for more information:

Town Clerk/Tax Collector's Hours

Monday	8:30 am - 4:00 pm
Tuesday	8:30 am - 4:00 pm
Wednesday	8:30 am - 4:00 pm
Thursday	8:30 am - 6:30 pm
Friday	8:30 am - 4:00 pm
Last Saturday of Month	8:00 am - 12:00 pm

2014 Revaluation Information

The Board of Selectmen have elected a more cost effective way to keep assessments current without the need for a complete State of New Hampshire mandated revaluation every five years. The Board has contracted with Corcoran Consulting, our current assessing agents, to begin this process this year. The Selectmen have opted for a less costly and more efficient process. Instead of the typical full revaluation process, the Selectmen have instructed the assessing agents to make changes to assessments every year, or every other year, according to the emerging market.

Accordingly, the taxpayers will not have to wait until five years have passed before the Town responds to emerging market conditions. Assessments in the Town will be adjusted if the market changes, each year or every other year, depending on how the market behaves.

Taxpayers will be informed of any pending changes in their assessments in August of 2014. Each property owner will be informed of the pending change and allowed an opportunity to discuss any changes with a staff appraiser.

Property inspections are a required part of any revaluation process. The Selectmen have authorized this to occur over a five-year continuing basis, beginning this year. Whether a property inspection occurs or not, every property will be subject to a changed assessment if the market indicates that assessments are out of line with the current real estate market.

Data collectors have commenced with the fieldwork for the 2014 Revaluation. Data collectors will be working in the area of Ashwood Rd, Briar Ridge Rd, Campbell, Dames Brook Drive, Ernst Rd, Farmington Rd, Gold Street, Governors Rd, Hare Rd, Jennifer Lane, Lord Lane, Mason Rd, Middleton Rd, Park Place, Route 153, Sleeping Bear Drive, Stewart Lane, Thurston Rd. and Varney Rd.

If you have any questions please contact office
 603-652-4501 x 6 Monday-Friday 8:00-4:00PM

To see a Vision for the Future Development of
 Exits 17 & 18 on the Spaulding Turnpike
 go to our Economic Development page

<http://miltonnh-us.com/economic.php>



Milton Free Public Library

Winter Hours

Sunday and Monday closed

Tuesday 3:30-7:30

Wednesday 12:00 -7:30

Thursday 10:00 - 12:00 & 3:30 - 7:30

Friday 1:00-7:30

Saturday 10:00 - 1:00



Nute Library

Sunday - Closed

Monday 9:00 - 5:00

Tuesday 9:00 - 5:00

Wednesday 9:00 - 7:00

Thursday 9:00 - 5:00

Friday 9:00 - 2:15

Saturday 9:00 - 12:00

The Friends of Milton Free Public Library are excited to announce they have purchased a Family Pass to the New Hampshire Farm Museum. Funds from a grant awarded to The Friends by the New England Grassroots Environmental Fund made the purchase available.

The pass is available for a Weekday, a Saturday OR a Sunday, and must be reserved in advance through the Library. If you are a Library member, your account needs to be in good standing to borrow the pass. Contact the library at 473-8535 for details.

mfpl@metrocast.net

<https://www.facebook.com/pages/Milton-Free-Public-Library/102043241201>

Milton Free Public Restoration & Repairs

Built in 1875, Milton Free Public Library is located on half an acre in the center of Milton Mills, New Hampshire. The unique architectural style is known as French Second Empire, with a mansard style roof and dormer windows upstairs. No other buildings in town exhibit this same style, however it was popularly used in public buildings at the time of its construction.

There have been no significant exterior renovations other than maintenance and the passage of time has taken its toll on this building, added to the New Hampshire Register of Historic Places in 2001.

In March of 2014, Milton voters approved funding \$20,000 towards critically needed repairs to the rear of the building. It is scheduled to begin after Labor Day of this year. Emergency egress from the second floor will be replaced and the ramp that provides accessibility will be improved.

The "Little Red Schoolhouse" houses your library and is in serious need of repair. The Library Trustees along with the Milton Select Board, continue to work hard to find ways of financing these repairs. A detailed report that was submitted by Team

Engineer NH, PLLC in July, 2012, details and prioritizes these needs. The Town of Milton has a link to a copy of the report on their website.

<http://miltonnh-us.com>

Nute Library welcomes new school librarian Helen Brock. Please stop by and say "Hi" and introduce yourself! The library calendar will be available at the front desk with the public activities for September.



Calling all parents!

Community Action Partnership of Strafford County is now accepting applications for our fall enrollment our Head Start Centers in Milton. Head Start is a national school readiness program that provides comprehensive education, health, nutrition, and parent and community involvement services to children from eligible families.

Head Start serves children at our centers or in the home: Children ages 3-5 (do not have to be potty trained); part-day center and home-based options; inclusive program and individualized curriculum; school-year schedule; and nutritious meals

Head Start Center Based (ages 3-5) in Milton offers:

- High-quality early education 5 days a week for 4 hours a day
- Individualized curriculum
- An inclusive program for children with disabilities or developmental delays
- Nutritious breakfast and lunch
- Health screenings (including dental, vision, and hearing)
- Access to mental health and nutrition professionals
- Family support through home visits and access to a Family Advocate

- Parent involvement and volunteer opportunities
- Educational field trips (transportation provided) and special events

For information and to learn how to apply, contact 603-516-8144 or email headstart@straffordcap.org

Head Start is a program of Community Action Partnership of Strafford County. Visit us at www.straffordcap.org

Susan Geier, NCRT
Community Services and Outreach Director
Community Action Partnership of Strafford County
P.O. Box 160, Dover, NH 03821-0160
Office: 603-516-8138
Cell: 603-969-9681
Fax: 603-516-8140



****Please note my new email is sgeier@straffordcap.org**

Milton Community News

Share The Help

Milton Community Services

Milton Town Office

Welfare Meetings are by appointment only.

Your must call the Milton Welfare Department at

603-652-4501 ext. 9

There is an answering machine and your phone call will be returned within three days. If you are in need of assistance please call to schedule an appointment to see if you meet the program requirements .



Milton Women's Club
Community Church of Milton
7 Steeple Street
Milton, NH 03851
Monthly Meeting
Thursday, June 12, 2014 @ 7:00
All are Welcome!

The summer is moving faster than most of us want but let's look forward to a wonderful Fall.

The Women's Club will return to their schedule and will be meeting on Thursday evening, September 11. We will have a NH Humanities program that we invite the public to. It will be Steve Taylor, the former NH Commissioner of Agriculture who will speak to us about Cows and Communities and the role cows have played in our lives for many generations. Where have they gone will be explored. A fun- filled evening that everybody that has grown up in the country is sure to enjoy. Please plan to join us at the Community Church on Steeple Street by 7 p.m. It is free to the public .The business meeting will be held following our speaker Steve Taylor. Plans will be discussed for our annual Christmas Fair to be held on

Milton Community Church Fellowship Hall

Well-Being Seminar

Actions to help ourselves, tapping into the wisdom of your body and mind to ease stress, pain, illness, PTSD and emotional ups and downs. This is a free program, but donations are gratefully accepted.

Mondays, 1:30-3PM, AUGUST 25- NOV 17,

All adults are welcome as long as there is room.

Candace Cole-McCrea will offer a free-of-charge program designed to empower others to ease their own health issues. Candace was trained at Boston University Hospital to teach this course, which is usually very expensive COME JOIN US AND LEARN HOW TO HELP YOURSELF!

To confirm admission: Call Candace at 652-7594 or email her at snowyowl@metrocast.net



NH Farm Museum
Rte. 125 - White Mountain Hwy
Milton, NH 03851
603-652-7840
info@farmmuseum.org.

NH Farm Museum Calendar 2014

603-652-7840/ e: info@farmmuseum.org.

August 26th Foraging Farm Tour -Tuesday

3:30 pm-6 pm - Check-in at Country Store

We provide the grocery bags and you join our Farmer Ethan to forage produce among the rows and fill your bag with great organically grown produce while you tour the farm. Must arrive by 5:30 pm to pick veggies. Please call 603-652-7840 to reserve limited to 12 people. \$25. per bag

August 28th Stories on the Farm: *The Water Gift and the Pig of the Pig* by Jacqueline Briggs Martin

Held every Thursday morning July & August at 10 am.

Join us for a fun farm story in the Big Yellow Barn followed by a related farm activity. Program starts at 10 am.

Recommended for children ages 3-10 years. *Included in Admission \$7 adult/\$ 4 child ages 4-17 yrs/ Museum members free*

August 30th The Milton Market 9:30 am to 1:30 pm

Farm Fresh Produce, jams/jellies, baked goods, crafts from local people and more. *There is no charge to shop the Market.*

Held the last Saturday of every month.

September 21st The Great NH Pie Festival Sunday 12 noon- 4 pm

If you like pie, this one's for you! Taste pie of all sorts from New Hampshire's best bakers and bakeries. You can enter your pie in our famous pie contest and win a great prize, enjoy a horse drawn ride around the farm, take a farmhouse tour and explore the exhibits in our barn. Kids will love the apple pie eating contest.

Event admission: \$10 adult, \$5 child,/ Museum members \$6/\$3 or bring a pie for the contest and get in free.

Prize Sponsors: King Arthur Flour of Norwich, Vermont.

September 27th The Milton Market 9:30 am to 1:30 pm

Farm Fresh Produce, jams/jellies, baked goods, crafts from local people and more.

There is no charge to shop the Market.

Held the last Saturday of every month.



Milton Historical Society
Monthly Meetings
2nd Tuesday of the Month
Public Welcome
7:30 PM - Milton Mills

The Township of Milton Historical Society ,Inc. meets the 2nd Tuesday of the month April - December at 7:30 PM. The Public is always invited to attend our meetings and if anyone is interested in seeing what we have to offer, we will be happy to open at any other time. Please call Bonnie Dunton at 755-2055 Susie McKinley at 473-2347 or Loretta Banks at 473-2083.

Recreational Activities for September



Senior Bingo Program
@Emma Ramsey Community Center
Tuesdays: 10:00 - 11:30 am
September 2nd, 16th, 23rd & 30th

Doors open @ 9:00. Coffee, donuts, fruit, cheese & crackers are served. In order to be in compliance with NH State Law, these senior bingo offerings are open to those who are 55 years old and older.



Senior Day @
Fryeburg Fair
Tue. September
30th, 7:00 - 4:30

Area seniors are invited to a day at the fair on Tuesday, September 30, 2014. Tuesday is "Senior's Day" with several activities offered that would be of interest to the senior set. For the past several years the Milton Parks and Recreation Department has offered a day at the Fryeburg Fair to our area seniors who would enjoy going to the fair and are physically fit enough for an afternoon of walking. The Fryeburg Fair offers over 200 of Maine's most talented musicians and entertainers throughout the fair week. Performances are on-going in five different locations all day long. Brochures are available upon arrival. There is no transportation fee for this trip and if you are 65 years or older, there is no gate fee charged for your admission. Wheel-chairs are available for rental on a first-come basis. There is a lot of walking involved, but there is transportation available to assist patrons from the bus area to the fair gates and there is also adequate rest areas throughout the fairgrounds and in most of the buildings throughout the fairgrounds. This trip is geared to those 50 yrs. And older, but if seating is available, we will consider allowing others to participate. Seat reservations will be taken on a first-come basis with Milton/Milton Mills Residents being given first consideration. For more information or to sign up, call 652-4501 ext. 800000

Sunday Bingo

Sunday Bingo
Sunday, September 28th
Lunch @ 12:00

Food served starting @ 12:00. Bingo begins at 1:00 pm. This is a senior bingo program and players must be 55 years old or older to participate



Senior Luncheon
Tuesday, September 23rd
TBA - Something Yummy!

The meal will be served immediately after the completion of the Tuesday bingo program. If you don't play bingo, you are still welcome to join us for the senior dinner. If you are interested in joining us, please call the recreation department phone and leave your name and number. 652-4844 ext. 8

Meal at noon prepared by Ann Walsh & Friends
 The senior luncheon program is open to area seniors who might not participate in other programs, but would still like to meet and socialize with the senior set. We host the meals once a month after one of the Tuesday bingo sessions.



Portland, Maine
Foodie Tour
Sunday, Sept. 14th
Wakefield Rec.
 603-522-9977



SIPS SMUGGLERS & SPEAKEASIES - A HAPPY HOUR TOUR

Enjoy craft concoctions and delicious appetizers amid tales of rum running and clandestine watering holes of the past! This leisurely-paced walking tour carves a path through the streets of the charming Old Port while we share stories of life as it was back in the 1800's up til the present day. Portland's Happy Hour Includes Samplings of: Local craft brewed beers, a rum cocktail favorite amongst the Maritimes, homemade Maine potato and sweet potato fries, a martini featuring Maine vodka or gin, house made potato chips with truffle oil, a unique spin on a classic cocktail, & fresh, hot Panini's. *This tour is educational, tasty, and definitely a happy two hours!* After the tour you will have two hours to grab dinner, browse the shops, or explore the Old Port.

\$55 per person (Gratuity Included)
 Sunday, September 14th
 Bus Leaves Wakefield Rec at 1pm
 & Rochester Community Center at 1:30pm
 Pre-registration is required before September 5th



Music Mill
35 Church Street
Milton Mills, NH
603-473-2522

LIBERTY MUSIC GATHERING

An acoustic music jam open to all
Musicians and listeners welcome.



Everyone is invited to join this acoustic music jam that is open to all musicians and listeners alike!
 Jam sessions are every other Saturday evening
 Aug. 30th & Sept. 13th & 27th
 From 6:00 pm - 9:30 pm
 Doors open at 5:30 pm
 Music instruction also available!

Milton Homeschoolers & Youth Opportunities

Milton Homeschoolers

Milton Homeschoolers, we have a web site called "Milton Homeschoolers" to share homeschool events, news and pictures with homeschool friends and families. If you homeschool in Milton or in area towns and would like to find out more about our activities, learning events and field trips, please contact Claudine Burnham at:

MiltonHomeschoolGroup@yahoo.com

Kids Club

Kids Club meets Friday, September 12th from 1-3pm at the Milton Town Beach for our "Not Back to School Day". Through a themed based unit, children of all ages rotate in segments where they learn, complete a craft, play games, and share in snack. This is a great time of learning and fun. All parents must participate in assisting in areas.

This month's theme is "apples". We'll be playing games with apples, making apple print book bags (Fee required) learning about Johnny Appleseed and having fun. This event is by reservation only, please rsvp to the address above.

Field Trip

McKenzie's Farm – Sept. 22nd (tentative)

Lost River - TBA

Reservations are required, email above address for more information.

Ballet Class

Now accepting new students ages 4-7years of age for Beginner Ballet on Thursday's from 2:30-3:30pm, \$10 per class at the Emma Ramsey. There is also a few spaces in Ballet 1 & 2 – ages 8-10 years at 5pm-6pm on Thursdays. Trial class will determine placement. Please email us for more details.

Homeschool Gym Class

Join us on selected Fridays from 3:30-4:40pm for a structured gym class at the Milton Elementary School. We will spend time in warm-up, exercise/stretching, drills and team games. To find out more, please email. Reservations are necessary by the previous Thursday.

Book Club

Join us for all ages as we read, complete crafts/activities and share discussions based on the book(s).

Club begins September 17th from 3-4:45pm at the Nute Library. Maximum of 12 students per club: preK-1st, 2-4th, 5th-6th, 7th-8th and High School. Reservations are required and supplies may be upon request.



Nute Ridge Bible Chapel

99 Nutes Rd Milton, NH
03851
(603) 652-9383
Youth Activities



*Teen Youth
Group*

Ages 3-11 yrs.

Ages 12—14 yrs.

Ages 15—18 yrs.

Milton Assembly of God Church

Sundays

9:00 am Children's & Adult Sunday School
10:00 am Sunday Services & Children's Church
6:30 pm Services

Tuesdays

9:00 am Men's & Women's Bible Study

Wednesdays

7:00 pm Service /Royal Rangers/Missinettes

All children and teens are welcome.

Please view our website @ www.miltonagchurch.org



**Community
Church
of Milton**

Community Church
of Milton
7 Steeple St.,
Milton, NH
603-652-7014

O Come Let Us Worship!

Community Church of Milton, NH
7 Steeple Street - corner of Dawson Street
603-652-7014 - Worship 10:00 a.m.
Sunday School September-June 10:00a.m.
Rev. Betsy S. Webber

Public Ice Skating

Get your family and friends together and come have fun skating inside. Music will play as you cruise our full size ice rink. Bring your own skates or rent a pair of our ice skates. Children 12 and under must be accompanied by an adult.

Helmets are recommended for all, and especially beginner skaters. Rochester Recreation & Arena does not have helmets available.



Open to all ages

Starting September 28, 2014

Sundays 12:00-1:20pm

Tuesday - Wednesday - Thursday 12:00-1:20pm

Extra Sessions during school breaks.

\$5.00 entry fee/\$5.00 skate rentals/\$5.00 sharpening.

Community Information

the
**CHILDREN'S
MUSEUM**
OF NEW HAMPSHIRE

Children's Museum of New Hampshire
6 Washington Street
Dover NH 03820
Phone: (603) 742-2002
Fax: (603) 834-6275
Email: questions@childrens-museum.org



Soldiers Helpers
21 Fox Lane
Rochester, NH 03867
September
Events



**SUNDAY
September 29th**
from 12-5

Help celebrate our 30th
birthday with crown
making, games, cake &
ice cream, and more!

Plus
musical performances
from Maine's
DANNY LION!

Check him out
at dannylionmusic.com

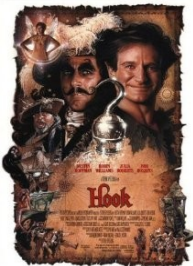
All happening here at
the Children's Museum
of New Hampshire



Seacoast Titan's Cheerleaders
Participants must be
Between 5 & 14 years old
Information @ (603)722-1255



The Seacoast Titans, a NH Pop Warner Football and Cheerleading Association is still accepting cheerleaders for fall 2014 season. Girls must be between the 5 and 14 years of age. Practice and home games are held at the Titans home field at the Strafford County Complex in Dover. Cheerleaders cheer at all football games and participate in Regional and State Pop Warner Cheer competitions. Girls from 17 surrounding communities are encouraged to participate. Another family from Milton is willing to help with transportation. Please call Dee Wiggin at 722-1255 for more information.



Kids Night Out
Emma Ramsey Center
Friday, September 26th - 6:00 - 9:00 pm
\$6.00 per child
Includes Snacks & Crafts
Registration Deadline - 9-19-2014
Limited to 20 kids

In honor of the late great Robin Williams we will kick off the fall Kids Night Out with "Hook"! We will celebrate with some Pirate activities and some pirate games.

This program is limited to school age children who would enjoy a night with their friends in a safe kid friendly environment.

To reserve a spot, please call 652-4501 ext. 8

Saturday, Sept. 6 - honor flight guardian class - usually from about 10-4 - radisson hotel - nashua, nh --- we need baked goods for this event -- we need about 3-6 volunteers. this is a charter flight so there will be a large number of veterans and guardians -- so we will need whatever help we can get.

Thursday, Sept. 11 - 100 nights of remembrance - <http://www.100nightsofremembrance.org/> veterans cemetery in Bowcawen, NH -- hot dog and hamburgers are being prepared before the ceremony -- they always appreciate extra desserts. soldiers helpers role at this event is to help the servers in any way needed and also to help in the parking lot. we need to be there at approximately 5 pm. chris and i are not 100% percent sure that we will be at this event, but we are not in charge at this event, so you would report to the people who are running it and they would instruct you on what they need help with. but if you can volunteer, please let me know and i will pass the info along to noel and i will give you contact info.

Sunday, Sept. 14 - nh run for the fallen -- Odiorne State Park, Rye, NH --- we need as many volunteers as possible and also anyone who would like to run in honor of our fallen, there is a registration form at the website. we need to be there for set up at approximately 5:30 - 5:45 a.m. registration starts at 6:30 and at that point in time we are serving to the spectators more than the runners. you can see the entire schedule at <http://www.runforthefallennh.org/> - you do not need to fill out the volunteer form -- please just let me know that you are planning to help -- the organization needs help with registration and last year soldiers helpers aided them with this and they are asking us to do this again this year. at 11:30 there is a lunch (this is brought in by another group and there was a charge last year, but we will check into that) and a live band - we stay and serve water for a good part of the day. we need baked goods and snacks for this event (packages of crackers, etc.)

this is the start of our "busy time of year" with a number of events upcoming. please, if you are able to help even if it just for part of the time of event we truly appreciate it. thank you very much and God Bless, alice and chris, founders, soldiers helpers

Community Information

Milton PTA News



2nd Annual Milton Has Pride Day
Saturday, September 20th
 (Rain Date is the 21st)
 11:00 am - 3:00 pm

Milton Pride Day is back! The 2nd annual Milton Pride Day hosted by the Milton Elementary PTA will be held Saturday September 20 (rain date September 21) from 11am-3. All community members, young and old, are invited to come to Milton Elementary school for a fun day or horse drawn wagon rides, face painting, balloon animals, carnival games and more. Several of Milton's businesses and organizations will be on hand providing information regarding their services including Milton Fire and Police, Milton Cubscouts, McKenzie's Farm, Milton Recreation, Friends of Nute and more. Some activities will be free of charge while others will have a small fee, most money going to fund local activities for children and families! **Please bring a pet item to be donated to Cocheco Valley Humane Society or a food item to be donated to End 68 Hours of Hunger (peanut butter, jelly, canned fruit, granola bars).** We hope to see you there!



Apple Pie Bake-Off
Pride Day
September 20th/ Rain Date
September 21st

We will be holding a Homemade Apple Pie Bake-off at Pride Day as well as an adult and child pie eating contest. The fee to participate in the pie eating contest is \$10 for an adult and \$5 for a child. If you are interested in submitting your pie into the contest or participating in the pie eating contest, please email us at mesnhpta@gmail.com!



Box Tops Donation Request
 Please help the Elementary
 School raise funds by donating
 your Box Tops!

Collect box tops to raise money for our elementary school! Box tops can be found on a variety of foods and products including Betty Crocker mixes, Progresso soups, Motts applesauce, General Mills cereals, Ziplock bags, Scott toilet paper and more. All you need to do is carefully cut out the little box top found on the item (make sure the expiration date can be read) and drop them off at one of our drop off locations: Milton elementary school, town line flea market, and the Emma Ramsey center. We raised over \$2000 with box tops last year, help us reach our goal of \$3000 for this year! In addition to box tops, we also collect Campbell soup labels and Hannaford Dollars. You can also join the app Shoparoo and contribute that way.



Holiday Craft Fair
Saturday, November 22, 2014
Nute High School
9:00 AM - 3:00 PM

A holiday craft fair will be held this year on November 22nd at Nute High School. We are looking for quality vendors to participate in this exciting community event. The cost is \$35 for a 10x10 space as well as a donation of a raffle item. If interested, please complete the attached application and return it to 8 School St. Milton NH 03851.

Check out our MES PTA Facebook site, our website
www.mesnhpta.org or email us at mesnhpta@gmail.com



Cub Scout Sign-up Night
Wednesday, September 10th
Milton Town Beach
Under the Gazebo
6:00 - 7:00 PM

The cub scouts will be at the open house on the 16th and pride day on the 20th. We will looking to sign up new scouts at both events. We will also be having a cub scout round up on the 24th to meet with parents and get new scouts signed up. All boys from 1 art grade to 5th grade are able to join. Scouting promises you the great outdoors. As a Scout, you can learn how to camp and hike without leaving a trace and how to take care of the land. You'll study wildlife up close and learn about nature all around you. There are plenty of skills for you to master, and you can teach others what you have learned.



2014 Milton Recreation
Youth Soccer Program
Open Registration
& Sign-ups
Organization Meeting
Saturday, Sept. 6th
9:00 AM - Town Beach

This program is open to children Preschool - 6th grade
 \$25.00 first child / \$20.00 siblings / \$35.00 non-resident
 This program depends on parent volunteer participation, so
 please consider helping out!

Registrations are available on the Town of Milton Website and at various locations around town, including the Recreation Office. We will keep registrations open until 9/13/14.

If you cannot make the organization meeting but would like to be involved in the program, please contact our office as soon as possible so we can include you in the program.

If the cost of registration prohibits your child/children from playing, please contact the office and we will see if we can work with you so that your child can play!

For more information your may call 652-4501 ext. 8 or ext. 9.

Milton PTA Juried Craft Fair Application

Date: **November 22, 2014, 9:00a.m. – 3:00p.m. (set-up @ 7:00a.m.)**

Location: **Nute High School, 22 Elm Street, Milton, NH**

Name: _____

Business Name: _____

Street Address: _____

City/Town: _____ State: _____ Zip code: _____

Home Phone: _____ Cell Phone: _____

Email: _____

Website: _____

Description of your product(s): _____

Since this is a juried fair, which means you will be selected to participate based on your items, please send photos, no more than 5 please, to miltonnhpta@gmail.com or mail to Milton Elementary PTA, 8 School Street, Milton, NH 03851. Photos should show an accurate representation of your work. If chosen to be a vendor at Milton's PTA Craft fair we will use the photo's for promotional use. We will make every effort to choose vendors quickly and notify you ASAP. If you are not chosen you will remain on a waiting list. All spaces are 10X10 for \$35.00. If you need a table provided, you will have to let us know and there will be an additional fee. Please let us know if you will need Electricity as it may be limited and you will need to provide your own cord. We would also like to ask that you donate an item to be raffled.

Disclaimer: Milton PTA/Milton School System/SAU 64 will not be held responsible for any damage, theft, personal injury, missing items, etc. that might result from its participation.

PAYMENT

Payment for your booth(s) must be paid in full to reserve a space.

Enclose check(s) payable to Milton Elementary PTA for total amount: \$ _____

Mail Registration Form and Payment to: **Milton Elementary PTA
8 School Street, Milton, NH 03851 Attn: Craft Fair**

If you have any questions, please call Tammy Crandall @ (603) 978-5101 or email: miltonnhpta@gmail.com

Thank you! Your participation is appreciated!