

THE MILTON GAZETTE

February 2014

News from the Town of Milton, New Hampshire

February 2014

Open Town/School Offices

The following candidates are running for town & school open offices that are listed below.

Selectman - Michael Troy Bernier; Tom Gray

Treasurer - Pamela J. Arnold

Fire Chief - Nicholas Marique

**Budget Committee - Robert P. Currier (2yrs)
- Jennifer Crone (2yrs)**

**Library Trustee - Les Elder (1 yr)
- Laurie B. Palmeria (2 yrs)
- Larry Brown (3 yrs)**

Cemetery Trustee - Larry Brown (2 yrs)

**Supervisor of the Checklist - Karen Brown (6 yrs)
Brandy Banks (4 yrs)**

Moderator - Chis Jacobs (2 yrs)

Trustee of the Trust Fund - Karen Brown (3 yrs)

Planning Board - Brian Boyers (3 yrs.)

**Zoning Board of Adjustments - Stanley J. Nadeau (1 yr)
- Luella Snyder (3 yrs)**

School District Moderator - Chris Jacobs (1 yr)

School District Clerk - No Candidates

School District Treasurer - Kristine M. Giunco (1 yr)

**School Board Member - Larry Brown (1 yr)
- Paul Steer (1 yr)
- Brandy Banks (3 yrs)
- Luella Snyder (3 yrs)**



**Milton Candidates Forum,
Sunday, Feb. 13, 2014 @ 6:30 p.m.
Milton Town Hall**



Chris Jacobs, Town Moderator for Milton will facilitate. All candidates for Town or School offices are invited to attend. The event is open to the public and voters will have the opportunity to question each group of candidates. For questions: contact Susann Brown at 652-4306 or sfb@metrocast.net.

Milton Town Meeting - Tuesday, March 11, 2014
8:00 AM—7:00 PM @ Emma Ramsey Community Center
This will be the second session of the SB-2 process in which the town and school budgets and all warrant articles are voted on. Absentee ballots are available through the clerks office, all ballots must be received on or before 5:00 pm on 3/10/14. Anyone seeking additional information on the elections should contact the town clerk's office@ 652-4501 ext. 3. No registrations can be received at the clerks office or by the Supervisors of the Check List after Saturday, March 1, 2014 at 11:30 am. Same day registration is available on election day@ the Supervisor's Table with ID and proof of residency.

School Deliberative Session - Saturday, February 8, 2014

Snow Date: February 9, 2014 (Sunday) 10:00 am

The residents are hereby notified that the first session (the Deliberative Session) of the Annual Town Meeting will be held on Saturday, February 8, 2014 beginning at 1:00 pm in the Nute High Cafeteria. The first session will consist of explanation, discussion and debate of each of the proposed warrant articles, and will also afford voters who are present the opportunity to propose, debate and adopt amendments to warrant articles, except those articles whose wording is prescribed by state law.

Supervisor of the Checklist Session

The Milton Supervisors of the Checklist will be meeting between 11:00 am – 11:30 am
On Saturday, **March 1, 2014** @ Emma Ramsey Community Center for correction of the checklist.
RSAA654:27, 28; 669:5



**Town of Milton Democratic Committee
Annual Meeting - February 23, 2014
4:00 pm @ Emma Ramsey Community Center**

MILTON DEMOCRATS MEET

All registered Democrats residing in Milton are invited to attend the annual caucus meeting of the Town Democratic Committee on Sunday, February 23, from 4 to 6 p.m. The purpose of the meeting is to elect officers and delegates to the 2014 State Convention and discuss participation in the upcoming election season. It's also an opportunity to meet and exchange ideas with Milton democrats. For more information: Susann Brown at sfb@metrocast.net or 652-4306.

Milton Fire and Rescue



February 2014 Gazette

Happy Almost Spring! It's February and it has been a long January with subfreezing temperatures on a regular basis. For those residents who have burned their pellet stoves throughout the month, you may want to take a few hours to check and clean your stove pipe. It would not be uncommon for the narrow 4" pipe to accumulate burnt pellet by-products. These may build up in the pipe, causing a blockage. There should be a clean out door on the bottom of the stovepipe (typically outside). Milton Fire-Rescue recommends you follow your manufacturer's instruction for periodic maintenance. A quick review of your owner's manual should help you determine if it is time for you to take some action to inspect and clean the pipe.

Along these same lines, if your home has an outside dryer or furnace vent near ground level, you should check the level of snow which may be accumulating and covering it. Besides reducing its efficiency of ventilating, it may also cause a problem. A quick check to identify that it is free of any blockage will help it to work as it is intended to work.

All this cold weather, snow and talk of making it through the winter may be depressing but spring is around the corner! It will not be long before residents will be stopping in, looking for their seasonal campfire permits. Some have already done so. Last summer the New Hampshire Forest Ranger in our area stopped into Milton Fire-Rescue and informed us of the need to conduct inspections of our burn permits. Last year when residents came in for the seasonal permits, members of Milton Fire-Rescue explained that in 2014, the department would be conducting inspections. That being said, this is the year. So if you would like a seasonal permit, you should stop at the station and an inspection will be scheduled.

On a completely new topic, after enjoying the company of a few residents at our Holiday Coffee Hour, a new project has emerged. A collection of the history of Milton Fire-Rescue and the Milton and Milton Mills Fire Districts is under way. A few details have been collected and it has come to our attention that many details have been confined to people's memories and photographs. If you have information concerning the history of firefighting or emergency medical services for the areas of Milton and Milton Mills, Robin would like to hear from you. Apparently the Milton Fire District was organized in 1905 and financial records were document in 1933. We have accumulated many photographs and we hope there may be people with more information or stories of the past. If you have some knowledge of this Milton history, please do not hesitate to contact us. Current research has shown us the Milton Town Reports beginning back in 1928. The hope will be to gather this information and have it available in some document form to pass on to future generations. Your help with this project will be greatly appreciated.

Once again the 2014 ballot will have a warrant article to bond a new fire station. For more information on the station design, please visit www.miltonfirestation.com.

Contact Information

Emergency Dial: 911

Station 1 : (603) 652-4201

Station 2: (603) 473-2157

Email: info@miltonfirerescue.com



Fire Station Open House - February 15, 2014

9:00 am - 1:00 pm

During Winter Carnival, fire personnel will be on hand to invite residents in to stop by to get a up-close look at the current conditions of the existing building and to see the plans for the future fire house and meet and greet some of our fire personnel & see the Milton Fire equipment.



News from Milton Town Hall

February Meetings @ Town Hall

Selectman: Mon, February 3rd & Tues., 18th (6:00 pm)
 Planning Board: Tuesday, February 4th (6:30 pm)
 Conservation Comm. :Monday, February 10th (6:30)
 Budget Committee: February (6:30)
 Zoning Board: Thursday, February 27th (6:00 pm)
 Townhouse Restoration: TBA (5:30 pm)
 Fire Department Wed., February 5th & 26th (5:30 pm)
 Recreation Comm.: Monday, February 10th (5:30 pm)
 Water District Comm.: Tues. February 25th (5:00) -
 (Downstairs in the Emma Ramsey Center)

Town of Milton
 2014 Proposed Warrant Articles
 To be voted on at the
 March 11, 2014 Town Election

http://miltonnh-us.com/index_262_3771076729.pdf

For information on the proposed
 Fire/EMS facility please visit
 the website or stop by the Milton Fires Station
 for information
<http://www.miltonfirestation.com>

To see a Vision for the Future Development of
 Exits 17 & 18 on the Spaulding Turnpike
 go to our Economic Development page
<http://miltonnh-us.com/economic.php>

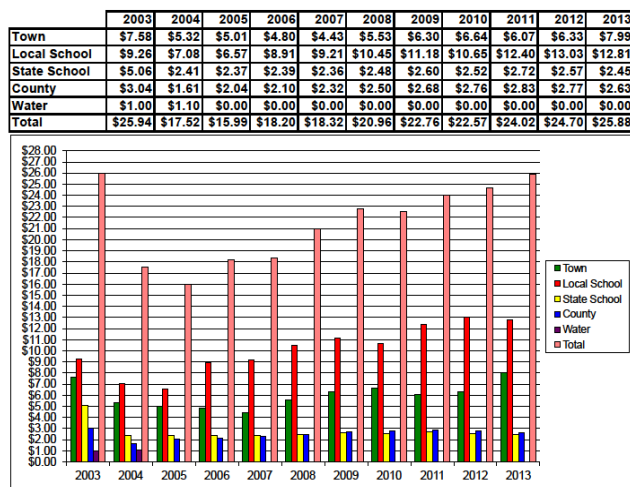
Current Employment Opportunities working for the Town of Milton

Check out the Town Of Milton's
 Website at: <http://miltonnh-us.com/>
 Job descriptions/Applications/Information
 Are available for printing or you can
 visit the town hall for printed applications.

Town Clerk/Tax Collector's Hours

Monday	8:30 am - 4:00 pm
Tuesday	8:30 am - 4:00 pm
Wednesday	8:30 am - 4:00 pm
Thursday	8:30 am - 6:30 pm
Friday	8:30 am - 4:00 pm
Last Saturday of Month	8:00 am - 12:00 pm

TAX RATES from 2003- 2013



2013 vs 2014 Tax Impact Comparisons

Article #	Description	2013	2014	Difference between 2013 and 2014	2014 Tax Increase per \$1,000.00	Total Tax Impact for 2014 Warrants per \$1,000.00
5	Fire Station	\$ -	\$ 284,885.00	\$ 284,885.00	\$ 0.78	\$ 0.78
6	Truck Lease	\$ -	\$ 65,615.00	\$ 65,615.00	\$ 0.18	\$ 0.18
7	Operating Budget	\$ 3,430,616.00	\$ 3,664,745.00	\$ 234,129.00	\$ 0.64	\$ 10.03
8	Truck Purchase	\$ -	\$ 158,486.00	\$ 158,486.00	\$ 0.43	\$ 0.43
9	Hwy Truck CRF	\$ 15,000.00	\$ 15,000.00	\$ -		\$ 0.04
10	Road Reconstruction	\$ 290,000.00	\$ 290,000.00	\$ -		\$ 0.79
11	Hwy Equip CRF	\$ 15,000.00	\$ 15,000.00	\$ -		\$ 0.04
12	Ambulance Vehicle & Equip CRF	\$ 10,000.00	\$ 10,000.00	\$ -		\$ 0.03
13	Fire Equip & Apparatus CRF	\$ 15,000.00	\$ 15,000.00	\$ -		\$ 0.04
14	Fire Vehicle Repair CRF	\$ 10,000.00	\$ 10,000.00	\$ -		\$ 0.03
15	Library CRF	\$ 5,000.00	\$ 5,000.00	\$ -		\$ 0.01
16	Recreation CRF	\$ 5,000.00	\$ 10,000.00	\$ 5,000.00	\$ 0.01	\$ 0.03
17	Cemetery CRF	\$ 5,000.00	\$ 5,000.00	\$ -		\$ 0.01
18	Bridge CRF	\$ 10,000.00	\$ 40,000.00	\$ 30,000.00	\$ 0.08	\$ 0.11
19	Hwy Grader	\$ -	\$ 36,970.00	\$ 36,970.00	\$ 0.10	\$ 0.10
20	Hwy Building CRF	\$ -	\$ 35,000.00	\$ 35,000.00	\$ 0.10	\$ 0.10
21	Police Computer CRF	\$ -	\$ 10,000.00	\$ 10,000.00	\$ 0.03	\$ 0.03
22	Police Officer Retention	\$ -	\$ 90,098.00	\$ 90,098.00	\$ 0.25	\$ 0.25
25	Library Bldg Repair Trust Fund	\$ -	\$ 20,000.00	\$ 20,000.00	\$ 0.05	\$ 0.05
Totals				\$ 970,183.00	\$ 2.65	\$ 13.08

NOTE: Due to varying external factors this should NOT be considered to be the final and totally accurate Representation of the Town's portion of 2014 tax assessment.

NOTE: Column to far right in red are NOT in addition to the 2013 tax rate, it is instead what the 2014 tax rate would look like excluding the influence of external factors, such as revenues and such.



Milton Free Public Library

Winter Hours

Sunday and Monday closed

Tuesday 3:30-7:30

Wednesday 12:00 -7:30

Thursday 10:00 - 12:00 & 3:30 - 7:30

Friday 1:00-7:30

Saturday 10:00 - 1:00

Milton Reads "My Side of the Mountain"

Ever thought about running away and living off the land? How does a teen teach himself falconry? These questions are answered in "My Side of the Mountain" by Jean Craighead George. The Milton Free Public Library has procured several copies of this Newbury Honor book so that Milton residents can enjoy reading the adventures of Sam Gribley. Sam "is terribly unhappy living in his family's crowded New York City apartment. So, armed with just the bare necessities-a penknife, a ball of cord, some flint and steel and the clothes on his back- he runs away to the mountains. There, Sam must rely on his own ingenuity and the resources of the great outdoors to survive-and he discovers a side of himself he never knew existed." (from the back cover)

Join your neighbors by reading about Sam's adventure then come enjoy Milton's Winter Carnival festivities including "Wildlife Encounters" on Saturday, February 15 (time TBA) at the Emma Ramsey Center and see some of the animals that Sam encounters (and makes his friends!). The Milton Reads program will conclude on Sunday, February 16th at 1PM at the Emma Ramsey Center in Milton with a pizza and book-related craft party. The movie "My Side of the Mountain" will be shown.

Fun Fan Fiction

The Friends of the Milton Free Public Library eagerly await this year's submissions to the 8th annual "Fun Fan Fiction" contest. Milton high schoolers are challenged to take an existing work of literature and enhance or change the story by adding a character or changing the ending, maybe adding a chapter to clarify something in the story. Submissions should be written in the original author's "voice" and yes, spelling and grammar count!

Entries are due at the Milton Free Public Library in Milton Mills by Friday February 6th at 6 PM. This contest is open to all Milton residents of high school age (middle schoolers please note that this contest will be held for the middle schoolers in April). Winners will be announced at Nute High School Thursday, February 20th during the "Nute Week" festivities.

On-going programs

Pre-School story time at the Milton Free Public Library is every Thursday morning 10:30.

Kninjas still knitting on Thursday nights at 7-9PM at the library

Yoga classes meet Saturday mornings at 8:30. For more information, contact Betsy Baker (603)473-2401

Karate classes meet Monday evenings. Please contact Sensei Howland at 473-8473.

The Milton Free Public Library is housed in the "Little Red Schoolhouse" 13 Main Street in Milton Mills. Our phone number is (603)473-8535. Our email address is mfpl@metrocast.net. Our website, which has links to our online catalog and to the New Hampshire Downloadable book, is MiltonFreePublicLibrary.org. To go directly to our online catalog: <http://miltonfreepubliclibrarynh.booksys.net/opac/mfpl/index>.



Nute Library

Sunday - Closed

Monday 9:00 - 5:00

Tuesday 9:00 - 5:00

Wednesday 9:00 - 7:00

Thursday 9:00 - 5:00

Friday 9:00 - 2:15

Saturday 9:00 - 12:00

Special Vacation Hours: Open February 24th 12:00 - 5:00 pm and February 27th 12:00 - 5:00 & March 1st 9:00 - 12:00 pm.

GED Classes: Nute Library will be hosting GED Classes on January 2nd, 9th & 16th & 23rd from 5:30 - 8:30 pm. Please contact Librarian Gail Hughes for additional information. 603-652-7829.

Saturday Morning Story Time: Saturday, Story time January 18th 9:30-10:15. This is an open story time and everyone is welcome to attend. Participants are encouraged to call and reserve a spot @ 652-7829.

Painting with Ann Marie: This class will be help on Wednesdays, February 12, 2014 from 5-7pm. The cost is \$30.00 per participant and includes the cost of all supplies and materials for the class. You may register by contacting the instructor at 988-5946. If you would like additional information, please contact the library at 652-7829.

Ladies Craft Group:

Our open craft group meets every Monday in the Nute Community room from 1:00 - 3:00 pm. New members are always welcome!

Book Sale: Book Sale in the Library Dec. 8th 10-2pm \$1.00 hardcovers, 4x\$1.00 paperbacks

Pre-School Story Time/Homeschool Book Club

Book Club begins again on January 22, meeting every other week for 6 sessions. The Homeschool Group have clubs from Pr-k to high school. They meet from 3-4:30pm on every other Wednesday. Certain grades require purchase of books and materials. To reserve your child, please contact:

MiltonHomeschoolGroup@yahoo.com

For more Information please check us out at:

<http://nutelibrary.books.officelive.com/default.aspx>



Milton Community News

Share The Help

Milton Community Services

Milton Town Office

Welfare Meetings are by appointment only.

Your must call the Milton Welfare Department at
603-652-4501 ext. 9

There is an answering machine and your phone call will be returned within three days. If you are in need of assistance please call to schedule an appointment to see if you meet the program requirements .



PUBLIC NOTICE TOWN OF MILTON, NH

The Town has enacted a winter parking ban, effective December 1st - April 15th from 10:30 PM - 7:00 AM and during declared snow emergencies, The ban prohibits parking in or on all public ways and Town Streets. Each violation will be subject to a \$25.00 fine and towing fee. The purpose of the winter parking ban is to allow winter maintenance crews unobstructed snow removal or ice



Join Milton
PTA from
9:00 - 1:00 pm
At the
Milton Town Beach
For a
Morning of fun
And competition
On their inflatable
obstacle course!

FYI Carnival Parking info for the Emma Ramsey Building

During the day of February 15th, the Milton Town Office parking lot can only be accessed directly off Rte. 125. Charles Street will be closed to through traffic from Mill Street to the Emma Parking lot. This will allow car-free travel for both the horse team and for participants that want to tour the fires station. We appreciate your cooperation with this. Residents who live on that end of Charles Street will be allowed to access their residence as usual. Our goal is to have a safe and fun day for all our residents.



NH Farm Museum
Rte. 125 - White Mountain Hwy
Milton, NH 03851
603-652-7840
info@farmmuseum.org.

A new program for the 2014 Milton Winter Carnival will be offered on Friday, February 14, 2014 from 4:00 - 7:00 pm. @ the NH Farm Museum

There will be a campfire, smores, & tin foil dinners! Weather permitting, Belgian Meadows Farm will on hand with their sleigh offering rides around the property. Participants will be invited to try their hand at making old fashion Victorian Valentines!

This program is free, but donations to help cover the cost will be gratefully accepted. Please reserve your spot by calling the

Farm Museum number or Milton Parks & Recreation @ 652-4501 ext. 8, please leave a message with the number of people planning on attending, so we can plan accordingly!

If we are lucky and the night is clear, the evening will be enjoyed under the full Snow Moon!

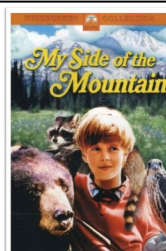


Belgian Meadows
Farm
Will be on hand both
Friday Night @
Farm Museum
&
Saturday @
The Emma Ramsey
Community Center
to give family rides

The Milton Winter Carnival Committee invites our residents to join Belgian Meadows Farm As they host both Wagon and Sleigh Rides Through out the weekend

They will be at the NH Farm Museum on
Friday Night 4:00 - 7:00 pm

To give sleigh rides around the property
And again on Saturday out of the Emma Ramsey
Community Parking lot from 11:00 am - 2:00 pm
Rides are sponsored by the Carnival!



@ The Emma, Sunday, February 16th

Milton Reads "My Side of the Mountain" Movie on the big screen. Join us from **1:00 - 4:00 pm** for a pizza party, movie viewing & craft related project. This event is sponsored by the MFPL and the Winter Carnival Committee!

More Milton Community News



Milton Women's Club
Community Church of Milton
7 Steeple Street
Milton, NH 03851
Monthly Meeting
Thursday, December 12, 2013 @ 7:00
All are Welcome!



Milton Free Public Library
13 Main Street
Milton Mills, NH 03852
(603) 473-8535
A Message from the MFPL
Trustees

Have you been to the Library this week?

The Milton Free Public Library, located at 13 Main Street in Milton Mills NH is waiting for you!

Built in 1875 as a schoolhouse, in 1992 the Library took possession of this magnificent building. The Milton Free Public Library is an exemplary representative of the historical and architectural development of Milton Mills. There are no other buildings left in Milton Mills that illustrate the Second Empire architecture so prevalent in the 19th Century.

If a library is defined as "a building or rooms containing collections of books, periodicals, and sometimes films and recorded music for people to read, borrow, or refer to" then perhaps Milton Free Public Library should be renamed Milton Free Public Library and Community Center. The building is a resource that supports community activities and whose loss would diminish the community's ability to define its architectural history and heritage. The Milton Free Public Library is appreciated by a large cross section of the community.

With a dramatic increase in patronage, as well as increase in use as a meeting place for various groups and organizations, a center for youth as well as adults, it is a vital part of the Milton Mills/Milton NH infrastructure.

Preservation is so much more than saving old buildings! Historic preservation champions and protects places that tell the stories of our past. It enhances our sense of community and brings us closer together: saving the places where we take our children to school, buy our groceries, and stop for coffee – preserving the stories of ancient cultures found in landmarks and landscapes we visit – protecting the memories of people, places, and events honored in our national monuments. Contact the Library for a list of events/programs or suggest a new one.

Join us on Facebook @ <https://www.facebook.com/pages/Milton-Free-Public-Library/102043241201>

We are off in January and February but will start up on March 13, 2014. Our program will be a New Hampshire Humanities Program with Steve Taylor a former Head of NH Department of Agriculture.

Guests are welcome. Look for the Valentines/Heart Month signs that will be put out at the end of the month. May your winter be fun, healthy and warmer.....

Judy Kimball
President



Soldiers
Helpers -
Serving Those
Who Serve
Since 2003

Soldiers Helpers will be selling 50/50 raffle tickets at the Winter Carnival. The price will be \$1 or 6/\$5. The drawing will be Saturday evening and you do not need to be present to win. Last year we mailed approximately 4,000 lbs. of items to our troops and helped at many veterans events. All proceeds will help us continue this effort. For further info about Soldiers Helpers, we are on Facebook; website (noted above – which is still under construction) or email Alice at pudgyaunt99@aol.com or call 603-781-4195. Please purchase a ticket or 2 when you see someone with one of our badges. Thank you. Chris and Alice Greenleaf, Founders, Soldiers Helpers.



5th Annual Multi Club Poker Run
Saturday, February 15, 2014
Milton registration site is
Milton Pump & Filter Shop

The 5th annual multi club poker run is scheduled for Saturday, Feb 15th. EVSC, Powder Mill SC and Seven Lakes SC are all on board. All clubs start in their respective areas and end at Moose Mountain by 2pm for poker hands and prize drawings. There will be 3 cash prizes again this year. \$10 to ride, \$2 for a sixth card to improve your chances to win top hand.

Recreational Activities for February



Senior Bingo Program
@Emma Ramsey Community Center
Tuesdays: 10:00 - 11:30 am
February 4th, 11th, 18th, 25th

Doors open @ 9:00. Coffee, donuts, fruit, cheese & crackers are served. In order to be in compliance with NH State Law, these senior bingo offerings are open to those who are 55 years old and older.



Children's Museum of New Hampshire
 6 Washington Street
 Dover NH 03820
 Phone: (603) 742-2002
 Fax: (603) 834-6275
 Email: questions@childrens-museum.org

We're hosting a **Valentine's Night** for kids so parents can enjoy a night out. Register now for February 14th! Ages 5 & up (4 w/sibling) \$30 for one child /\$25 each additional child in the same family. Limited to 30. Scavenger hunt, take-home crafts, and science activities in an after-hours version of the Make It or Break it Club. Cheese pizza, fruit, juice and water for dinner, and each child can decorate their own cookie for dessert.

Every Friday from 3-4:45 pm, kids ages 6-12 are invited to **Make It or Break It Club**: drop in to experiment with electronics, tools, construction and more!

Storytime: Sundays @ 2:00 pm.

Sunday Bingo

Sunday Bingo
Sunday, February 23rd
Lunch @ 12:00

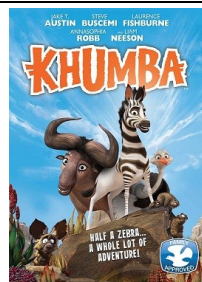
Food served starting @ 12:00. Bingo begins at 1:00 pm. This is a senior bingo program and players must be 55 years old or older to participate



Senior Luncheon
Tuesday, February 25th
Chicken Parmesan

The meal will be served immediately after the completion of the Tuesday bingo program. If you don't play bingo, you are still welcome to join us for the senior dinner. If you are interested in joining us, please call the recreation department phone and leave your name and number. 652-4844 ext. 8

Meal at noon prepared by Ann Walsh & Friends
 The senior luncheon program is open to area seniors who might not participate in other programs, but would still like to meet and socialize with the senior set. We host the meals once a month after one of the Tuesday bingo sessions.



Kids Night Out
(drop-off program)
Emma Ramsey Ctr.
Khumba
Friday, February 21, 2014
6:00 - 9:00 pm.

Life is not all black and white for Khumba. A young zebra, born with only half his stripes, is rejected by his superstitious herd and blamed for a sudden drought affecting the land. Teaming up with a sassy wildebeest and a flamboyant ostrich, Khumba sets out on a daring mission across the Karoo desert to find the legendary waterhole where the first zebras got their stripes. Along the way he meets a host of colorful characters, but before he can reunite with his herd, Khumba will have to come face to face with a menacing leopard to take part in an epic battle...
 Khumba's got to earn his stripes!

Registration limited to the first 20 kids. Food & Craft is planned on participant signup. 652-4501 ext. 8 or miltonrd@metrocast.net

Participants must register by 2-14-2014 @ 4:00 pm.



Music Mill
35 Church Street
Milton Mills, NH
603-473-2522

LIBERTY MUSIC GATHERING

An acoustic music jam open to all!
 Musicians and listeners welcome.



Everyone is invited to join this acoustic music jam that is open to all musicians and listeners alike!
 Jam sessions are every other
 Saturday evening
 February 15, 2014
 From 6:00 pm - 9:30 pm
 Doors open at 5:30 pm
 Sponsored by
 Liberty Chapel, Milton Mills, NH.
 Music instruction also available!

Milton Homeschoolers & Youth Opportunities

Milton Homeschoolers

Milton Homeschoolers, we have a web site called "**Milton Homeschoolers**" to share homeschool events, news and pictures with homeschool friends and families. If you homeschool in Milton or in area towns and would like to find out more about our activities, learning events and field trips, please contact Claudine Burnham at:

MiltonHomeschoolGroup@yahoo.com

Kids Club

Kids Club meets Friday, February 14,th from 1-3pm at the Emma Ramsey Center. Through a themed based unit, children of all ages rotate in segments where they learn, complete a craft, play games, and share in snack. This is a great time of learning and fun. All parents must participate in assisting in areas.

February's theme is "Happy Valentine's Day". We'll be playing games, making *secret hearts*, decorating heart-shaped sugar cookies and having fun. We will also have an opportunity to exchange Valentine's, so start making your Valentine Boxes. This event is by reservation only, please RSVP to the address above.

Field Trip

Movie at Smitties, Sanford, ME

Date and Movie TBD Reservations are required, email above address for more information.

Book Club

Book Club for all grade levels has started and we still have room for our Prek-K and 1-3rd grade groups. We meet every other Wednesday from 3-4:45pm at the Nute Library. Please email to let us know of your interest.

Animal Project

Animal Project event is scheduled for March 22nd at the Emma Ramsey. Each student/family presents an animal and displays their findings on a presentation board, diagrams, models, etc. This event also includes a meal based on their animal topic to share with the joining families. Deadline for details and other information is February 26th. For more information, please email above address.

Homeschool Gym Class

Join us on selected Fridays from 3:30-4:40pm for a structured gym class at the Milton Elementary School. We will spend time in warm-up, exercise/stretching, drills and team games. To find out more, please email. Reservations are necessary by the previous Thursday.

Winter Carnival

Join us for crafts and games and much more at the upcoming Milton Winter Carnival on February 15th at the Emma Ramsey Center. Look for us on the schedule. Come help us out or join in on the fun!



Nute Ridge Bible Chapel

99 Nutes Rd Milton, NH
03851
(603) 652-9383
Youth Activities



*Teen Youth
Group*

Ages 3-11 yrs.

Ages 12—14 yrs.

Ages 15—18 yrs.

Milton Assembly of God Church

Sundays

9:00 am Children's & Adult Sunday School
10:00 am Sunday Service & Children's Church
6:30 pm Service

Tuesdays

9:00 am Men's & Women's Bible Study

Wednesdays

7:00 pm Service / Royal Rangers / Missinettes
All children and teens are welcome.

Please view our web site at www.miltonagchurch.org

Learn to Skate lessons offered throughout the year starting in September. Call us at (603) 332-4120

LEARN TO SKATE for ages 3-12

Rochester Arena

Beginner skating lessons designed to introduce children to basic skating concepts. Instructors focus on learning skills AND having fun on the ice. Children will love to skate and learn the necessary skills. Parents often comment how quickly their children gain balance and confidence during the lessons. Don't miss out!! Lessons progress from beginner to intermediate. Skate rentals available for \$3 per lesson.

2014 MILTON WINTER CARNIVAL SILENT AUCTION DONATIONS

The Milton Winter Carnival Committee is currently seeking donations for the 2014 auction that supports both the cost of the carnival and the Milton Arts in the Park Summer Festival. If you have any new items that you would be willing to donate to help ensure the continued success of either the carnival or the arts festival. The recreation department will gratefully accept them at the Emma Ramsey Center until Friday 02/14/2013!



**Tai Chi 18 for Health
Wednesday Mornings
Emma Ramsey Community
Center
\$25.00 per month, \$8.00 Class**

Classes are suitable for beginners with no previous experience, seniors and those recovering from injuries would benefit from the gentle moves of this ancient practice of movement.

Tai Chi 18 consists of a series of 18 simple, gentle movements that are easy to learn and practice. It is deeply relaxing, helps to reduce mental stress and physical tension and improve circulation and balance.

If practiced regularly, it promotes better health and well being. Instructor: Esther Rhode contact her either by phone @ (978) 809-1411 Or by e-mail at esther.rhode@gmail.com New students are welcome and encouraged to stop by and give the class a try!



**Homeschool Ballet Class
Tuesdays & Thursdays
Emma Ramsey
Community Center
Ages 6 yrs. & Up
Adult Stretch/Strengthen
Contact: Claudine
MiltonHomeschoolGroup@yahoo.com**

Ballet Classes

Adults stretch and strengthen class Tuesdays from 4pm - 4:45pm. Classes are \$10/hour and instructed by a current ballerina from Portland Ballet Company.

**Tickets on Sale for the
2014 Milton Winter Carnival Sweetheart's Dance
Featuring the Tim Theriault Band with
Guest singer Mrs. Jody Gourlay**

Join us on **February 15th from 8:00 - 12:00 am**
Milton Moose Lodge

288 White Mountain Highway
Milton, NH 03851 (603-52-9750)

Tickets: \$15.00 each / \$25.00 a couple

Tickets are limited: first come first serve
call: 652-9750 or 652-4501 ext. 8 for tickets

Event Sponsors for 2014

Family Fishing Derby

Sponsored by Eastern Boats, Inc

Wildlife Encounters

Sponsored by The Lockhart Fund

Tricky Dick's Magic Show

Sponsored by Cumberland Farms

Port-A-Toilets

Sponsored by Sebastian Septic

Town of Milton

Milton Fire Department

Milton Police Department

Milton Public Works

WC Carnival Auction Supporters

To Date contributions

Lady Bug

Studley's Flower Gardens |

Array of Flowers

Air Gas

Village Bouquet

Red Hook Brewery

Milton Learning Center

Belgian Meadows Farm

Susann Foster Brown Studio

Metrocast Cablevision

China Palace

Cameron's Garden Supply

Jimmy Jones Locker

Canobie Lake Park

South Main Pizza

Lakeside Mart

Auto Imaging

Wild Willy's Burger

Rochester Opera House

Private Citizens

Milton Hardware

Mr. Bubbles Car Wash

Taylor Rental

Stuarts Woodworking



1st Annual
**MOOSE MOUNTAIN
RUNAROUND**
3 1/2 MILE SNOWSHOE RACE
Sunday, February 9, 2014
10 AM Start
Moose Mountain Recreation, Brookfield, NH

COURSE DESCRIPTION:

The course combines moderate elevation change, open fields, snowmobile trails and single track. Approximately 500' elevation gain and loss on this loop course.

DIRECTIONS:

The race starts and ends at Moose Mountain Recreation, 107 Moose Mountain Road in Brookfield, NH 03872 (www.moosemountainrecreation.com). Adequate parking is available. Site is approximately 2.5 miles west of the intersection of Route 109 and Route 16 (Sanbornville, NH)

SNOWSHOES: Snowshoes will adhere to specifications of USSSA minimum size of 120 square inches. Rental Dion snowshoes will be available at a cost of \$5.00 per pair. A limited number of rentals will be available, and should be reserved by contacting the race director: Dan Coons at 603-520-8533 or by email at: trailrnr@yahoo.com

ENTRY:

The entry fee for the race is \$18.00, prior to February 9th, and includes a wicked sweet buff for all entrants. Day of the race entry will be from 8:30 - 9:30 am and cost will be \$20.00. The race will benefit Moose Mountain Regional Greenways. (MMRG) is a regional land trust serving Brookfield, Farmington, Middleton, Milton, New Durham, Wakefield, and Wolfeboro.

REGISTRATION: Online available through: RunReg

Check in and day of race entry will be from 8:30 to 9:30am on February 9th. For pre-entry, please fill in and sign bottom form. Please make checks payable to: MMRG.

QUESTIONS: Please contact
Race Director: Dan Coons
Telephone: 603-520-8533
Email: trailrnr@yahoo.com

Return entry and payment to:
Moose Mountain Run Around
C/O MMRG
PO Box 191
Union, NH 03887

The chance of injury is possible due to the nature of the course. This is not a flat race on paved roads. It will be scenic, but will also involve hidden and not so hidden sticks, logs, stumps, holes, and rocks. Getting lost is not likely, but is a possibility. Please do not enter if these risks scare you.

AWARDS: Awards will be presented to top finisher in the usual age groups, as well as the overall winners.

AMENITIES: Post race food will be available to all entrants. Food will also be available for purchase from the snack bar at Moose Mountain. Moose Mountain Recreation has generously made available discounted tickets to their tubing park to all registrants and guests.

NAME: _____ AGE (as of 2/9/2014) _____ SEX _____

ADDRESS: _____ CITY _____ STATE _____ ZIP _____

Email Address: _____ DATE OF BIRTH: _____

WAIVER: In consideration of your accepting my entry, I agree to be legally bound, hereby for myself, my heirs and my executors, waive and release any persons or organizations involved with the Moose Mountain Run Around. This includes but is not limited to the organizers, Moose Mountain Recreation Area, Moose Mountain Regional Greenways and any and all private landowners. I acknowledge that snow shoe racing in general and this race in specific, because of the difficulty of the race, treacherous terrain and unmonitored portions of the course present hazards that I am willing to accept. I further attest that I am sufficiently fit and trained for completion and/or competition in this event.

SIGNATURE: _____ GUARDIAN: _____ DATE: _____
(IF RUNNER IS A MINOR)

