



# THE MILTON GAZETTE



April 2013

*News from the Town of Milton, New Hampshire*

April 2013

## **Milton Water District Annual Meeting**

The Milton Water District Commission has set the date for their Annual District Meeting. The meeting will be held on Sunday, April 14th @ 1:00 pm at the Emma Ramsey Community Center. This meeting is open to the public, however only registered voters who reside within the water district may vote on any budgets or warrants that are presented at this meeting.



## **Milton Rabies Clinic**

Saturday, April 6, 2013  
10:00 am - 12:00 pm  
Milton Highway Department



All dogs must be on a leash and all cats must be in a carrier. Prior vaccination records required (unless first time vaccination) Cost is \$16.00 per animal. This event is sponsored by the Milton Veterinary Clinic & the Milton Police Department. Any questions, please contact the Town Clerk @ 652-9414.

## **2013 Dog Licenses (4/01/13-3/31/14) are ready to be processed.**

Please remember to bring a copy of the Rabies Certificate and/or a copy of the Spaying/Neutering Certificates

All dogs should be licensed by **April 30<sup>th</sup>** of every year. A late fee will be assessed for each month. Unfortunately, if you have not licensed your pet by

Unaltered dogs	\$9.00
Spayed/Neutered	\$6.50
Senior Citizens (65+)	\$2.00 / first dog
Group License	(5 or More Dogs) \$20.00

June 1<sup>st</sup>, an additional \$25.00 fee may be charged. Don't forget...you can now renew your dog license on-line as long as we have an updated rabies certificate.

## **Milton Earth Day Cleanup**

Are you looking for a way to celebrate Earth Day this year? Join your neighbors in Milton on Saturday, April 20 for an Earth Day road cleanup to beautify the town and build community feeling. Following the morning cleanup activity, 10 am - noon, people will gather to celebrate and share a potluck lunch at the NH Farm Museum, 1305 White Mountain Highway (Rte 125), Milton.

Cleanup is planned for portions of the White Mountain Highway and Applebee Road in Milton Mills. Both roads are designated NH Hampshire Scenic and Cultural Byways and part of the Branch River Valley Trail. If you wish to add your street to the cleanup list, recruit some neighbors to help out and register as a road leader call Kari Lygren, Educational Coordinator of Moose Mountain Regional Greenways, at (603) 978-7125. Event organizers will assist with planning and provide bags, road safety cones, and pickup service for separated bags of recyclables, trash, and aluminum cans.

Participants are asked to arrive 20-30 minutes early at the Farm Museum before heading out to pick up litter at 10 am. Please wear brightly colored clothing for good visibility while walking the roadsides and bring work gloves for picking up trash. Children 12 or younger must be accompanied by an adult. Your potluck contribution may be cold items or a hot crockpot dish. Although registration is not required, it would be helpful to know you're coming; please call (603) 978-7125 or email [info@mmrg.info](mailto:info@mmrg.info).

This Milton Earth Day Cleanup is sponsored by Moose Mountains Regional Greenways, the NH Farm Museum, Branch Hill Farm, the Milton Recreation Department, the Milton Conservation Commission, Milton Home Schoolers, Milton Fire and Rescue and Pack & Troop 155 Milton Scouts.



## News from Milton Town Hall

### April Meetings - Town Hall

Selectman: Monday, April 1st, 15th & 29th (6:00 pm)  
 Planning Board: Tuesday, April 2nd & 16th (6:30 pm)  
 Conservation Commission: Monday, April 8th (6:30 pm)  
 Budget Committee: Thursday, April 18th (6:00 pm)  
 Zoning Board: Thursday, April 25th (6:00 pm)  
 Townhouse Restoration: TBA (5:30 pm)  
 Fire Department: Wednesday, April 3rd & 24th (5:30 pm)  
 Recreation Commission: Monday, April 8th (5:30 pm)  
 Water District Commission: Tuesday, April 30th (5:00) -  
 (Downstairs in the Emma Ramsey Center)

The Board of Selectmen is pleased to announce the hiring of Elizabeth Dionne as our new Town Administrator. The public is invited to come meet Ms. Dionne at the Board of Selectmen meeting on Monday, April 1, 2013 at 6:00 pm.



**Public Notice  
 Milton Parking  
 Ban is in effect  
 until further notice  
 per order of the  
 Milton Public Works  
 Director**

A \$10.00 fine will be issued for any vehicle that is found parked on the street, and is subject to be towed at the owners expense. During snow plowing operations, a vehicle that constitutes a hazard may be removed upon request by the town Highway Department, and towing will be at the owners expense as well.

### Town Clerk/Tax Collector's Hours

Monday	8:30 am - 4:00 pm
Tuesday	8:30 am - 4:00 pm
Wednesday	8:30 am - 4:00 pm
Thursday	8:30 am - 6:30 pm
Friday	8:30 am - 4:00 pm
Last Saturday of Month	8:00 am - 12:00 pm

The Town Clerk/Tax Collectors office  
 Will be close on Monday, April 8, 2013  
 to accommodate staff training

The Milton Zoning Board of Adjustments  
 The Milton Zoning Board is seeking new members.  
 If you are interested in becoming a member of the  
 board, please send a letter of interest to the  
 Board of Selectman, PO Box 310, Milton NH 03851.

### Temporary Seasonal Position Available

Summer Camp Program Coordinator

The Town of Milton is seeking a caring, energetic, responsible and motivated individual to help develop, coordinate, and organize a 9 week summer camp for approximately 50 children and staff.

The position of Program Coordinator is for approximately 40 - 50 hrs. per week. A Bachelor's degree or equivalent with past recreation experience required and past summer camp experience preferred. Looking for a detail oriented person who has experience with groups, loves kids and is skilled in organizing activities, arts & crafts, and games and is comfortable with overseeing seasonal staff. Camp runs Monday - Friday, no weekend hours. Please submit a cover letter and resume to the Milton Recreation Department, PO Box 310, Milton NH 03851  
 Town of Milton is an Equal Opportunity Employer



### Did you know?...

About the **Milton Food Pantry** located at 55 Industrial Way off of White Mountain Highway (RTE. 125)

We are located in the **Milton Head Start** to the left of the building every Tuesday mornings from 9:00 am - 12:30 pm. It is not too late to sign up for **Fuel Assistance** either! Come to our Farmington Office M-W-F or call 516-8191 to get your appointment before April 30<sup>th</sup>.

## **Milton Fire and Rescue**



### **March Report**

Milton Fire-Rescue would like to extend its sincere appreciation shown by the voters of Milton who turned out to vote on March 12<sup>th</sup>. Although the vote was close, the fire station article only lost by 21 votes. The warrant article did receive a majority of 57%; however, 60% of the votes cast that day, were needed for a positive outcome. As required by the NH State Fire Marshal's Office, an effort is continuing to pursue of a fire station. Therefore, the building committee will be meeting on April 10<sup>th</sup>. The members of the building committee have been very diligent and their efforts have been faithful to trying to bring to the Milton community a modest yet adequate facility. Their time and devotion is appreciated beyond what words can describe in this newsletter.

At this point, Milton Fire-Rescue remains in the current Central Station located at 460 White Mountain Highway and will continue to operate based on the variances the NH Department of Labor and the NH Fire Marshal's Office granted us, as we continue to seek to construct a safe and compliant building. As of March 27<sup>th</sup>, there have been 171 incidents in the Town of Milton. 129 of those calls have requested the ambulance.

For the past six or seven years, Milton Public Safety Association has held a fund raiser twice a year at the Mi-Te-Jo Campground's tractor pulls. The organization has sold food in an effort to help with the creation of a new fire station. This year, there are plans to hold additional fund raising events.

Currently we are seeking donations for a "calendar raffle". The 30 day calendar will feature donations which already include a cord of wood, a \$75 gift certificate from Cameron's Home and Garden Center, a two night stay at Mi-Te-Jo Campground, some Pampered Chef supplies and a Car Wash N' Wax by a local Fire-Rescue member.

Each donation will be assigned a day during the month of August. On that day, a winning number or name will be pulled and the winner will win whatever prize that has been assigned to that day. Therefore with the purchase of a "one month calendar" you are eligible for up to 31 prizes (31 days in August). Calendars will be available to purchase sometime in April. Meanwhile if you would like to make a donation to be included on our calendar, please contact the fire station at: 652-4201. Someone will gladly take your information and a committee member will get back to you with more details.

Another fundraising event is going to happen during April's Rabies Clinic. The Milton Public Safety Association will be selling hotdogs and holding a bake sale at that time. Your support in our efforts to help defray the cost of the station is GREATLY appreciated.

As spring is surely to arrive sometime here in the near future, please stay safe! Watch for bicycles and motorcycles as the weather warms up and pedestrians that come out from hibernation.

### **Contact Information**

**Emergency Dial: 911**

**Station 1 : (603) 652-4201**

**Station 2: (603) 473-2157**

**Email: [info@miltonfirerescue.com](mailto:info@miltonfirerescue.com)**

Building Committee Meeting  
Wednesday, April 10th - 6:00 pm  
Emma Ramsey Community Center  
This meeting is for current  
Building Committee Members

### **World Health Day - 7 April 2013**

World Health Day is celebrated on 7 April to mark the anniversary of the founding of WHO in 1948. Each year a theme is selected for World Health Day that highlights a priority area of public health concern in the world.

### **The theme for 2013 is high blood pressure**

For more information on World Health Day 2013 please visit: <http://who.int/world-health-day/en/>



### **Milton Free Public Library**

#### **Winter Hours**

**Sunday and Monday closed**

**Tuesday 3:30-7:30**

**Wednesday 12:00 -7:30**

**Thursday 10:00 - 12:00 & 3:30 - 7:30**

**Friday 1:00-7:30**

**Saturday 10:00 - 1:00**

#### **Do you own an e-reader?**

Milton Free Public Library (MFPL) is investigating the costs and benefits of joining the New Hampshire State downloadable book consortium. This service allows patrons of the participating library to download audio books onto MP3 systems and e-books onto their e-readers (iPads, kindles, nooks and the like...). Many libraries in the state already offer this to its patrons. MFPL would like to know if it would be a good fit in Milton. Please let us know: 1. Do you own an e-reader or are thinking about getting one? 2. Would you use this service? 3. Are you currently a patron of a library in another town in order to use this service? (and paying extra?). Of course, we welcome any other questions and comments about this program.

Stop in and visit us with your suggestions. You can also email your responses to : [MFPL@metrocast.net](mailto:MFPL@metrocast.net). or message us on Facebook.

#### **Fun Fan Fiction takes on the Middle School.**

The Friends of the Milton Free Public Library are happy to announce a new "Fun Fan Fiction" contest- for Milton's middle school students. This contest is open to all Milton students who are currently in 6, 7, or 8th grades. Middle schoolers are encouraged to remake an established work of fiction to make it their own- add a character or scene, change the ending or an existing scene. The Friends are asking that each submission include a copy of a page from the original work, and a brief description of the original work (from the book jacket or back of book), a note about where the change takes place. Each work should echo the "voice" of the original author. Students will also be judged on correct spelling, grammar, and correct use of punctuation. 3 prizes will be awarded: The 1st prize winner will receive a check for \$75, 2nd prize is \$50, and 3rd place \$25. The due date for submission is April 5th. Prizes will be awarded at the Nute Middle School "Nute Week" assembly April 26. Please send submissions either through Mrs Soucy (Nute Middle School students) or directly to Milton Free Public Library (please mark item for the contest, attention Jessie Estevao).

#### **Plant Sale May 25th**

It is time to "Think Spring". The Friends of the Milton Free Public Library will host a plant sale at the library May 25. Proceeds from the sale will go toward a small raised garden at the library. The local children will be invited to help plant and maintain the garden and watch it grow!



### **Nute Library**

**Sunday - Closed**

**Monday 9:00 - 5:00**

**Tuesday 9:00 - 5:00**

**Wednesday 9:00 - 7:00**

**Thursday 9:00 - 5:00**

**Friday 9:00 - 2:15**

**Saturday 9:00 - 12:00**

**Saturday Morning Story Time:** Saturday, April 20, 2012 9:30—10:15. This is an open story time and everyone is welcome to attend.

#### **Ladies Craft Group**

Our open craft group meets every Monday in the Nute Community room from 1:00 - 3:00 pm. New members are always welcome!

#### **Quilters Group - Quilting 101**

This is an on-going craft group. New members are welcome at any time. Bring whatever quilting project you are currently working on and our local quilt master Carole Sullivan will be on hand to offer help and encouragement. No project is too big or too small. Participants supply their own materials and sewing machine, and Carole will supply the help you need in completing your project.

#### **Home School Reading Club**

This is a bi-monthly reading club open to all home school children who wish to participate. New members are welcome. Please contact the library if you would like more information on this group. The group meets every other Tuesday afternoons from 12:30 - 1:30 pm.

#### **Pre-School Story Time**

This group is open to all pre-school children. The group meets at the same time as the Home School Reading Club. Participants share stories and a simple craft.

**On-Going Book & Video Sale:** Nute library has books and videos that have been either donated or deleted from the library collection on sale at the front of the library. There are some really good bargains to be had. This is a wonderful way to stretch your holiday budget and help the library purchase new items for the current collection.

For more information on any of these programs please call the library @ 652-7829.

**For more information please check us out at:**

**<http://nutelibrary.books.officelive.com/default.aspx>**



# Milton Community News

## Share The Help

### Milton Community Services

Milton Town Office

Tuesdays & Thursdays 8:00 - 3:30 pm

Welfare applications.

If you are in need of assistance please call to schedule an appointment to see if you meet the program requirements @ 652-4501 ext. 9



### **News from the Community Action Partnership of Strafford County**

Expecting a child? Have children ages 0-5?

Head Start wants you and we're taking applications now for Fall 2012 enrollment. Apply today for early education and family services through Head Start and Early Head Start in Strafford County. We have Head Start Centers and home-based programs **at no cost** to eligible families, Call us at 603-516-8144 or email at: [headstart@co.straftord.nh.us](mailto:headstart@co.straftord.nh.us).

CAP of Strafford County operates food pantries in Dover, Farmington and Milton to provide short-term supplies of food to eligible households. Our Milton pantry will now be open on Tuesday mornings. We are always seeking donations of non-perishable food items such as canned meat, soups, stews, vegetables, pasta and sauces, peanut butter and other items such as grocery store gift cards. For information or to learn how to donate, call 603-516-8146 for information.

#### **Milton Pantry**

55 Industrial Way (side entrance)  
603-652-0990 ext. 112

Tuesdays 9 a.m. to 12:30 p.m. (**New hours as of March 19, 2013**)

#### **Farmington Outreach Pantry**

527 Main Street  
603-516-8191

Monday, Wednesday, Friday 8:30 a.m. to 12 noon

#### **Dover Outreach Pantry**

61 Locust Street, McConnell Center  
603-516-8126

Monday, Tuesday, Wednesday and Friday 9 a.m. to 3 p.m.  
Questions? Please contact:

Susan Geier

Community Services and Outreach Director  
Community Action Partnership of Strafford County  
P.O. Box 160, Dover, NH 03821-0160  
Office: 603-516-8138; Cell: 603-969-9681; Fax: 603-516-8140



NH Farm Museum

Rte. 125 - White Mountain Hwy  
Milton, NH 03851

603-652-7840

[info@farmmuseum.org](mailto:info@farmmuseum.org).

Museum open Wednesday thru Sunday 10 am – 5 pm mid-June thru mid-October, weekends to mid-November. Admission \$7 adult, \$4 child ages 4-17 yrs, members free general admission and most events.

**April 5<sup>th</sup> NH Farm Museum Cookbook Committee Maple Dinner Friday 6:30 - 8:30 pm** *Details coming soon.*

**April 6<sup>th</sup> Introduction to Blacksmithing Workshop w/ Steve Woodman 10:00 am - 3:00 pm**

This workshop is held in the Farm Museum's historic blacksmith shop and introduces participants to the basics of blacksmithing. Participants will learn about the history, tools and techniques of blacksmithing and have an opportunity to try out some tools and learn some skills. Instructor Steve Woodman is a skilled blacksmith and gunsmith and works out of his grandfather's blacksmith shop in Lebanon, Maine. He is the lead blacksmith at the NH Farm Museum and has studied historic blacksmithing tools and techniques extensively. Class size is limited to 8, must be 16 yrs or older to participate. Fee: \$55, \$45 museum members. Registration required. Call 603-652-7840 or email: [info@farmmuseum.org](mailto:info@farmmuseum.org)

**April 20<sup>th</sup> Earth Day Roadside & Farm clean-up & w/ Moose Mountain Regional Greenways 10:00 am - 1:00 pm**

Bring your gloves and gather at the NH Farm Museum for a community clean-up along the roadsides and around the farm followed by a pot-luck lunch. Bring a dish to share for lunch! Free.

**April 22<sup>nd</sup> & 24<sup>th</sup> Earth Week Family Programs 10:00 am - 1:00 pm**

Join us for Earth Day stories, planting activities, making seed tapes, composting worms, nature hikes and gathering spring herbs, tasting sorrel soup, barn hunts and visits with the farm animals. Drop-in from 10am until 1 pm No registration necessary. \$5 adult, \$3 child 4-17yrs, Museum members free.

**April 26<sup>th</sup> Earth Week Hike in the w/ Moose Mtn. Regional Greenways 11:00 am**

Hike starts at the Farm Museum. Open to all – prepare for a 2 mile hike through the woods of Branch Hill Farm conservation land. Free.

**April 27<sup>th</sup> Sheep & Wool Day Saturday 10:00 am - 2:30 pm**

Sheep shearing, sheep herding, wool activities & spinning demonstrations. \$5 adult, \$3 child 4-17 yrs, Museum members free.

## More Milton Community News



**9th Annual Branch River Paddle**  
**Saturday, May 25, 2013**  
**10:00 am – 2:00 pm**  
**Milton, NH**

Bring your kayak or canoe for this scenic paddle along the conserved banks of the Branch and Salmon Falls Rivers. An introduction by Nels Liljedahl of Natural Resources Conservation Services and stops en route with naturalists. Boat transport and picnic lunch provided. Co-sponsored by Moose Mountains Regional Greenways and Branch Hill Farm/CSFCT. *\$15 Donation requested.* Registration required; call Kari Lygren at 603 978-7125 or email [info@mmrg.info](mailto:info@mmrg.info).



## **Upcoming Pack #155 Events**

**April 26th - 28th - Cub Scout Fish & Run**

Fish & Run (Native Americans), Farmington Fish & Game  
 64 Old Bay Road, New Durham NH  
 If you would like to see some of the fun that these kids are having, please check them out on Facebook  
<http://www.facebook.com/pages/milton-cub-scouts/pack155/157450744281786>  
 or on the Pack #155 website page  
<http://sites.google.com/site/pack155nh/home>  
 For more information you may contact  
 Jamie Berry, Cubmaster @ 603-833-8047



Milton Elementary PTA is selling  
 T-shirts  
 To promote our STAR spirit!

Short Sleeve T's: \$6.00 / Long Sleeve T's: \$11.00

- T-shirts will be grey with purple & gold design
- The order form is attached to the gazette and is for up to 8 shirts. Please contact the school if you need addition forms
- Please include cash or check for total amount due with your order form by April 15, 2013 payable to Milton Elementary PTA.
- T-shirts should be in by mid May
- \*there are additional charges for XXL - 6XL



Milton Elementary School  
 8 School Street  
 Milton, NH 03851  
 603-652-4539  
[www.milton.k12.nh.us/MES/index.htm](http://www.milton.k12.nh.us/MES/index.htm)

### April Calendar

- 4/4 – 3<sup>rd</sup> Quarter Closes**  
**4/16 – Center for Wildlife Presentation MES Cafeteria from 6:00 - 7:00pm**  
**4/19 – Family BINGO – MES Cafeteria from 6:00 - 8:00 pm**



MES to host  
 Author John Steven Gurney  
 Tuesday, April 16th  
 Renowned children's author  
 to visit our elementary  
 school kids along with  
 a book signing for  
 pre-ordered books!



MES Fine Arts Festival  
 April 18, 2013  
 Nute High School & Library  
 5:00 pm (K-2) & 6:00 pm (3 - 5)  
 Public is Welcome!

The date is set! Our annual Fine Arts Festival will be held on 4/18/13 at Nute Middle/High School and Library. The K-2 stage performance will be at 5:00 and the 3-5 performance at 6:00. Student art work will be on display in the back of the gymnasium. Please plan on meeting your teacher in the Nute cafeteria 15 minutes prior to showtime. More details will be coming your way soon!

### **Fifth Grade Raise Funds for new Springboard!**

Hat or Stuffed Animal Day Friday- On Friday's the student can wear a hat, or bring their favorite stuffed animal to school if they donate a \$1.00. Gym leaders will go to the classroom and collect the money every Friday. The fundraiser will run until the beginning of June.

Parent Advisory Council will meet Tuesday April 30th at  
 6:00 in the MES Library - PLEASE JOIN US!

## Recreational Activities for April



### Senior Bingo Program Tuesdays: 10:00 - 11:30 am **April 2nd, 9th, 16th, 23rd & 30th**

Doors open @ 9:00. Coffee, donuts, fruit, cheese & crackers are served. In order to be in compliance with NH State Law, these senior bingo offerings are open to those who are 60 years old and older.



### Senior Luncheon **April 23, 2013** **Ham & Fixings!**

The meal will be served immediately after the completion of the Tuesday bingo program. If you don't play bingo, you are still welcome to join us for the senior dinner. If you are interested in joining us, please call the recreation department phone and leave your name and number. 652-4844 ext. 8

Meal at noon prepared by Ann Walsh & Friends  
The senior luncheon program is open to area seniors who might not participate in other programs, but would still like to meet and socialize with the senior set. We host the meals once a month after one of the Tuesday bingo sessions.

## **Sunday Bingo**

12:00 (Lunch), Bingo (1:00)  
Emma Ramsey Ctr.  
April 28th

Food served starting @ 12:00. Bingo begins at 1:00 pm.  
This is a senior bingo program and players must be 60 years old or older to participate

## **LIBERTY MUSIC GATHERING**

An acoustic music jam open to all  
Musicians and listeners welcome.



Donations are gratefully accepted.  
There is no cost for admission & the coffee is free!

Everyone is invited to join this acoustic music jam that is open to all musicians and listeners alike!

Jam sessions are every other  
Saturday evening  
April 13th & 27th  
From 6:00 pm - 9:30 pm  
Doors open at 5:30 pm

Sponsored by  
Liberty Chapel  
Milton Mills, NH.  
603-652-2522



**Children's Museum of New Hampshire**  
6 Washington Street  
Dover NH 03820  
Phone: (603) 742-2002  
Fax: (603) 834-6275  
Email: [questions@childrens-museum.org](mailto:questions@childrens-museum.org)

Friday, April 5, 5:30 – 8 pm: Dollar Deal Night

Friday, April 5, 6:30-7:15 pm & Saturday, April 6, 10-10:45 am: Anyone Can Grow Food - Seed Sowing & Growing

Saturday, April 13, 10 am – 2 pm:  
Books Alive - Meet Corduroy

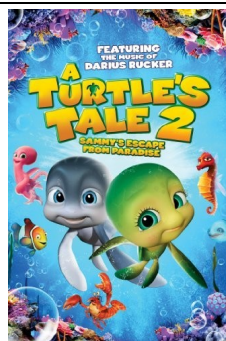
Sunday, April 14, 10 am – 12 noon:  
Autism Partnership Program

Thursday, April 18, 2:00 – 4:00 pm - Alzheimer's Café

Saturday, April 20, 10:30 am – noon  
Parent - Child Creative Art Series - Stomp Rocket Launchers

Monday, April 22, 10 am – 3 pm:  
Be An Earth Hero - An Earth Day Celebration

Tuesday – Thursday, April 23, 24 & 25. 9 am – 2 pm:  
Expedition Cochecho! - An Adventure in Science Vacation Camp



**Kids Night Out**  
(drop-off program)  
Emma Ramsey Ctr.  
Friday, April 19th  
6:00 - 9:00 pm.  
\$6.00 per child  
Includes Supper & Craft  
Registration deadline: 4-12-2013

When Sammy and Ray find themselves trapped in The Tank, an underwater aquarium, they must hatch a plan to escape and reunite with their grandkids, Ricky and Ella, and protect them from the dangers of the ocean. But they'll have to get past Big D and his dopey thugs first. With the help of some unlikely friends, Sammy and Ray find that when you work together, anything is possible!

Registration limited to the first 20 kids. Please don't sign your child up unless they are really coming. Food & Craft is planned on participant signup. 652-4501 ext. 8 or e-mail!



## More March Recreational Happenings .....



Girls 14 - 20 yrs. Old  
Camp Fully Involved  
Applications now on-line  
Sunday 7/28/13 - Friday 8/2/13



Camp fully involved is a unique live-in firefighting program for young women interested in the fire service. This is a week-long camp in July for women between the ages of 14 and 20.

Camp Fully Involved is hosted by the New Hampshire Fire Academy in Concord, NH. The cadets and staff are housed in on-site dormitories and are able to conduct all evolutions in a state of the art training facility using some of the best equipment available today. For more

information and to get an application, you can visit their website at [www.campfullyinvolved.com](http://www.campfullyinvolved.com).

High school students can contact the Nute High Guidance Office for more information



**Discover WILD New Hampshire Day Set for  
Saturday, April 20, 2013  
NH Fish & Game, 11 Hazen Dr. Concord**

**CONCORD, N.H.** – Mark your calendars for Discover WILD New Hampshire Day, an Earth Day celebration coming this year on Saturday, April 20, 2013. This family-friendly event takes place from 10 a.m. to 3 p.m. on the grounds of the New Hampshire Fish and Game Department at 11 Hazen Drive in Concord, N.H. Admission is free.

This fun day is a chance to enjoy exhibits from environmental, conservation and outdoor organizations from throughout New Hampshire. See live animals, big fish and trained falcons. Participate in archery, casting, and crafts for the kids. Explore new trends in recycling, environmental protection and check out energy-efficient hybrid vehicles. Come Discover WILD New Hampshire with us -- connecting you to life outdoors!

Discover WILD New Hampshire Day is co-sponsored by the New Hampshire Fish and Game Department and the New Hampshire Department of Environmental Services. Watch for details at [wildnh.com](http://wildnh.com).



### **\*\*PTA NEWS\*\***

The PTA will be hosting York Center for Wildlife on April 16, at 6:00 p.m. The Center will be speaking about Spring adaptations in animals. They will bring several NH native animals with them.



On April 19, at 6:00 p.m. the PTA will be hosting a family bingo at the elementary school. For \$10.00 a family will receive a large pizza, 4 waters and bingo cards. There are lots of prizes. People are encouraged to bring a dessert to share.

## e-Nute News

### **50/50 Raffle**

The Middle School Yearbook hold a 50/50 Raffle. Anyone interested in purchasing a ticket (\$1.00 each or 6 for \$5.00) can contact Ms. Baker in Room 111. Help support the Middle School Yearbook.

### **Prize Calendars for sale by the Junior Class**

The Junior Class is selling prize calendars for the month of April. Calendars are \$10.00 each. People will be eligible to win every day of the month. There are some really great prizes available. Help support the Junior Class!! See Ms. Weymouth or any junior for more information or to purchase a ticket!

## **Papa Gino's®**

## **Community Fundraiser**

We will earn 20% of the sales made by our families and friends during this time.  
Be sure to submit this certificate when ordering.

**When:** Thurs. April 18

**Time:** 4-9 p.m.

**Where:** Lilac Mall, Rochester

**Phone:** 332-9843

**END 68 HOURS OF HUNGER  
Milton Program**

Papa Gino's will donate 20% of the total pre-tax sales from all the guests that order (dine-in, carry-out and delivery) with the flyer during your fundraiser.

If ordering online, please reference flyer in the comments section.



**Family Kick-ball - To Begin in April**  
Contact: [miltonrd@metrocast.net](mailto:miltonrd@metrocast.net)

The recreation department is currently looking for families who are interested in playing family kick-ball this year. Last year we had several families that continued the season into summer and have expressed an interest in having the program open to families instead of just the kids. If your family is interested in being part of a family kick-ball program, please contact [miltonrd@metrocast.net](mailto:miltonrd@metrocast.net) and let us know! Please put (kick-ball) in the subject line when e-mailing.



## Milton Homeschoolers News

Milton Homeschoolers, we have a web site called "**Milton Homeschoolers**" to share homeschool events, news and pictures with homeschool friends and families. If you homeschool in Milton or in area towns and would like to find out more about our activities, learning events and field trips, please contact: [NHkidsinfo@yhaoo.com](mailto:NHkidsinfo@yhaoo.com)

### Kids Club

Kids Club meets Friday, April 12<sup>th</sup> from 1-3pm at the Emma Ramsey Center. Through a themed based unit, children of all ages rotate in segments where they learn, complete a craft, play games, and share in snack. This is a great time of learning and fun. All parents must participate in assisting in areas. April's theme is "Out-back Walk-a-Bout". We'll be learning about Australia from a guest speaker who has just returned from a visit. This event is by reservation only, please rsvp to the address above.

### Around the World

Join us for our 2013 "Around the World" on May 4th from 11pm-3pm at the Emma Ramsey in Milton. This gives an opportunity for families to present a display of facts and information on their choice country. We have a 12 family participant maximum.

### Patriotic Hymns

For those who are interested in meeting at the Union Schoolhouse on Monday's from 2-3 to learn Patriotic Hymns, please e-mail Carol Petruszewicz at [clmcc2befree@yahoo.com](mailto:clmcc2befree@yahoo.com). We are hoping to perform at the Home MADE show in May as well as on the 4th of July in the Rochester Knights of Columbus building.

### Home M.A.D.E Family & Friends Nite Extravaganza

We welcome homeschoolers to participate in our upcoming Home M.A.D.E. (Music, Arts, Dance Educators) Program. The date of this 3<sup>rd</sup> annual event is Saturday, May 18<sup>th</sup>, at the Farmington Opera House from 6pm-8pm. Doors open at 5:30pm. Come join to us for some family friendly entertainment. To participate, please email at address above.

### Jump Rope

Join us for our fall session of Jump Rope. We meet twice a month on Fridays from 3:30-4:30pm at the Milton Elementary School. This is a free event coached by Steve Hyzer. All ages are welcomed. Check for dates on our Milton Homeschool web-site calendar section or email to the above address. Be sure to have your child wear sneakers, comfortable clothing and bring a water bottle. Jump ropes are available, but your child can bring one from home as well.

Farmington Opera House from 6pm-8pm. Doors open at 5:30pm. Come join to us for some family friendly entertainment. To participate, please email at address above.

### Ballet Program

Homeschool Ballet classes are available on Tuesday's and Thursday's at the Emma Ramsey Center. Classes are taught by Deborah Grammatic, a current professional dancer for the Portland Ballet Company. For more information, please email address above

### Book Club

Our Homeschool Book Club meets bi-monthly at the Nute's Library on Wednesday's from 3-4:45pm. We have started our winter/spring session of six meetings, but keep this event in mind for our fall session.

### Fieldtrips

Join us as we listen to NH Youth Band at UNH on April 3 at 7pm. This is a free event and open to all. No RSVP necessary. FMI contact: UNH Music Dept.: (603) 862-2404

Dance Northeast presents dancers from area dance schools at the Rochester Opera House on April 6<sup>th</sup>, 2pm – Jr. Company and Student Choreographers (\$8/ticket) & 7pm – Sr. Company & New Choreography (\$14). FMI contact: [www.rochesteroperahouse.com](http://www.rochesteroperahouse.com)

We are planning to visit "Hannaford" in Rochester to learn more about healthy heart eating & UNH music department. Date is April 19th. To find out more, please email to above address.

### Community Service

We will be joining other area groups to help out the Milton Earth Day Cleanup on Saturday, April 20<sup>th</sup> from 10-1pm. Contact us for more information.

### Upcoming Homeschool Conventions

*2013 Spring CHENH Convention*, Rick and Marilyn Boyer will be coming as our keynote speakers. The location is the same as last year; The Margate Resort in Laconia, and the dates are April 19th and 20th. Visit: <https://www.chenh.org/Convention> FMI.

### *2013 MassHOPE CHRISTIAN HOMESCHOOL CONVENTION*

APRIL 26 - 27, 2013 DCU CENTER - WORCESTER, MASSACHUSETTS

<http://masshope.us/index.php?sub=Convention> FMI

*2013 NHHC Homeschool Workshop - April 6th, in at the Concord, NH*

<http://nhhomeschooling.org/conventions-workshops-curriculum-sales> FMI

# Milton Summer Kick-off

## Saturday, June 8th & Sunday, June 9th

The Milton Recreation Department is in the beginning stages of planning the 2013 Milton Summer Kick-Off.

Again this year we will be hosting a two-day event featuring a two-day speed boat competition hosted by the South Shore Outboard Association and an Antique Boat Show hosted by the Antique & Classic Boat Society and the Antique Outboard Motor Club. We will also be hosting our Second annual Antique Car & Custom Rod Show. If you would like to help plan this event or would like to participate in this event, please contact us. If you are a vendor or a business/group that would like to join us for this event please contact the recreation department as soon as possible so we can plan for your participation. If you would like additional information or would like to help, please contact the recreation department @ 603-652-4501 ext. 8



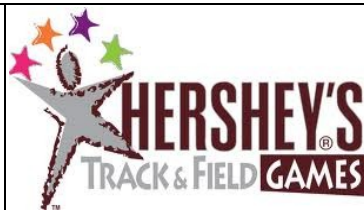
## American Legion News



"The time is coming when Nute H.S. Juniors with decent marks, and plans for further education to look into the American Legion sponsored week long Boys State Program. It cost the Post over \$300 for each student it sponsors so if a Student or Parent wants to look into it, don't hesitate to contact Bob McKinley (473 2347) or any member of the Post. Every student that has attended this Program over the years has come back with nothing but praise, And parents, don't hesitate to enquire about this one time opportunity. (No Obligation)

Our next regular meeting is scheduled for Wednesday, April 10, 2013 at 7:30 pm. All Veterans that have been in the military during a time of conflict are invited."

Thanks, Bob McKinley



Looking for  
Milton Youth  
Interested in joining  
Hershey Track

## Hershey Track

Ages: 9-14 years old by December 31, 2013

Practices: May and June

This is an amazing program that is sponsored by the Hershey Company. This is a program where kids challenge their potential and explore track and field sports while running, jumping and throwing. We will have practice meets to help prepare for the district meet on June 22. The top six finishers go on to the Hershey State Finals on June 28. A minimum of five finalists at the state meet will be considered for the New England/Atlantic Provinces Team that will compete at the North American Finals in Hershey, Pennsylvania.

Christine Collins

Assistant Director of Parks and Recreation  
NH State Chair Hershey Track and Field  
Town of Wolfeboro, NH  
PO Box 629

Wolfeboro, NH 03894

[wolferecassist@metrocast.net](mailto:wolferecassist@metrocast.net)

603-569-5639

Fax 603-569-1817



## Half Moon School of

## Martial Arts

## Martial Arts for Ages 7 to 107

Tuesday & Thursday night

7:00 pm — 8:30 pm

Combining Kung Fu, Jiu-Jitsu and Karate, Shaolin Kempo is a complete self defense system offering challenges, both physical and mental, that teach respect, discipline and that the ultimate goal of Martial Arts training is not to have to use it

Arrive 15 minutes early to warm up

One night a week : \$10.00 per class or \$30.00 a month or \$50.00 for two. Two nights per week: \$10.00 per class or \$45.00 a month or \$80.00 for two months.

For more information contact Al @ 603-781-5230

# Milton Elementary PTA

## T-shirt Order Form

Pre-order Deadline **April 15, 2013**

Make Checks Payable to **Milton Elementary PTA**

The following prices are for a Grey Short Sleeve T-shirt with Gold Stars and Milton Elementary School Screen Printed in Purple, or Grey Long Sleeve T-shirt with Gold Stars and Milton Elementary School Screen Printed in Purple

### Youth Sizes

XS-XL Short Sleeve T = **\$6.00**  
 XS-XL Long Sleeve T = **\$11.00**

### Adult Sizes

S-XL <u>Short Sleeve T</u> = <b>\$6.00</b>	<u>Long Sleeve T</u> = <b>\$11.00</b>
2X <u>Short Sleeve T</u> = <b>\$7.00</b>	<u>Long Sleeve T</u> = <b>\$12.00</b>
3X <u>Short Sleeve T</u> = <b>\$8.00</b>	<u>Long Sleeve T</u> = <b>\$13.00</b>
4X <u>Short Sleeve T</u> = <b>\$9.00</b>	<u>Long Sleeve T</u> = <b>\$14.00</b>
5X <u>Short Sleeve T</u> = <b>\$10.00</b>	<u>Long Sleeve T</u> = <b>\$15.00</b>
6X <u>Short Sleeve T</u> = <b>\$11.00</b>	<u>Long Sleeve T</u> = <b>\$16.00</b>

**Student Name:** \_\_\_\_\_ **Classroom:** \_\_\_\_\_

**Phone Number:** \_\_\_\_\_

**Total Due:** \_\_\_\_\_  
 (please include payment with order form)

- |    |   |             |
|----|---|-------------|
| 1) | Size: _____ Circle: <u>Youth</u> or <u>Adult</u><br>Circle: <u>Short Sleeve T</u> or <u>Long Sleeve T</u> | Cost: _____ |
| 2) | Size: _____ Circle: <u>Youth</u> or <u>Adult</u><br>Circle: <u>Short Sleeve T</u> or <u>Long Sleeve T</u> | Cost: _____ |
| 3) | Size: _____ Circle: <u>Youth</u> or <u>Adult</u><br>Circle: <u>Short Sleeve T</u> or <u>Long Sleeve T</u> | Cost: _____ |
| 4) | Size: _____ Circle: <u>Youth</u> or <u>Adult</u><br>Circle: <u>Short Sleeve T</u> or <u>Long Sleeve T</u> | Cost: _____ |
| 5) | Size: _____ Circle: <u>Youth</u> or <u>Adult</u><br>Circle: <u>Short Sleeve T</u> or <u>Long Sleeve T</u> | Cost: _____ |
| 6) | Size: _____ Circle: <u>Youth</u> or <u>Adult</u><br>Circle: <u>Short Sleeve T</u> or <u>Long Sleeve T</u> | Cost: _____ |
| 7) | Size: _____ Circle: <u>Youth</u> or <u>Adult</u><br>Circle: <u>Short Sleeve T</u> or <u>Long Sleeve T</u> | Cost: _____ |
| 8) | Size: _____ Circle: <u>Youth</u> or <u>Adult</u><br>Circle: <u>Short Sleeve T</u> or <u>Long Sleeve T</u> | Cost: _____ |

For office Use only  
 Check or Cash:  
 Total Collected: \_\_\_\_\_